

SOLARIXPEDIA

Installation guide: how to install Solarix RAL keystones

SOLARIX S XKJ-xx-STP-RAL-SA KEYSTONE SPECIFICATIONS

- Shielded **tool-less** RJ45 **50 µin** category 5E, 6, and 6A keystones with interchangeable **colour masks**
- Reliable keystones with excellent performance meeting international cabling standards
- **Component Level** certification by independent testing laboratory FORCE
- Also tested for **4PPoE/PoE++** (according to IEC 60152-99-002)
- Easy installation, RAL FIT interchangeable colour masks, GROUND LOCK mechanism, SECURE CAP, and COMPACT HD design

WHAT YOU NEED FOR INSTALLATION

- Installation cable sheath **stripping tool** (e.g. the one from Solarix tools)
- Precision side **cutters** (e.g. Solarix HT-222)
- Siko pliers 250 mm to **firmly close** the keystones (e.g. Bosch 1.600.A02.7PR or FESTA 17061, ideally with plastic scratch protection for the keystone)
- Shielded Solarix **category 5E, 6, 6A, or 7** installation cable (depending on the keystone type)
- Solarix SXKJ-5E-STP-RAL-SA, SXKJ-6-STP-RAL-SA, or SXKJ-10G-STP-RAL-SA **keystones**

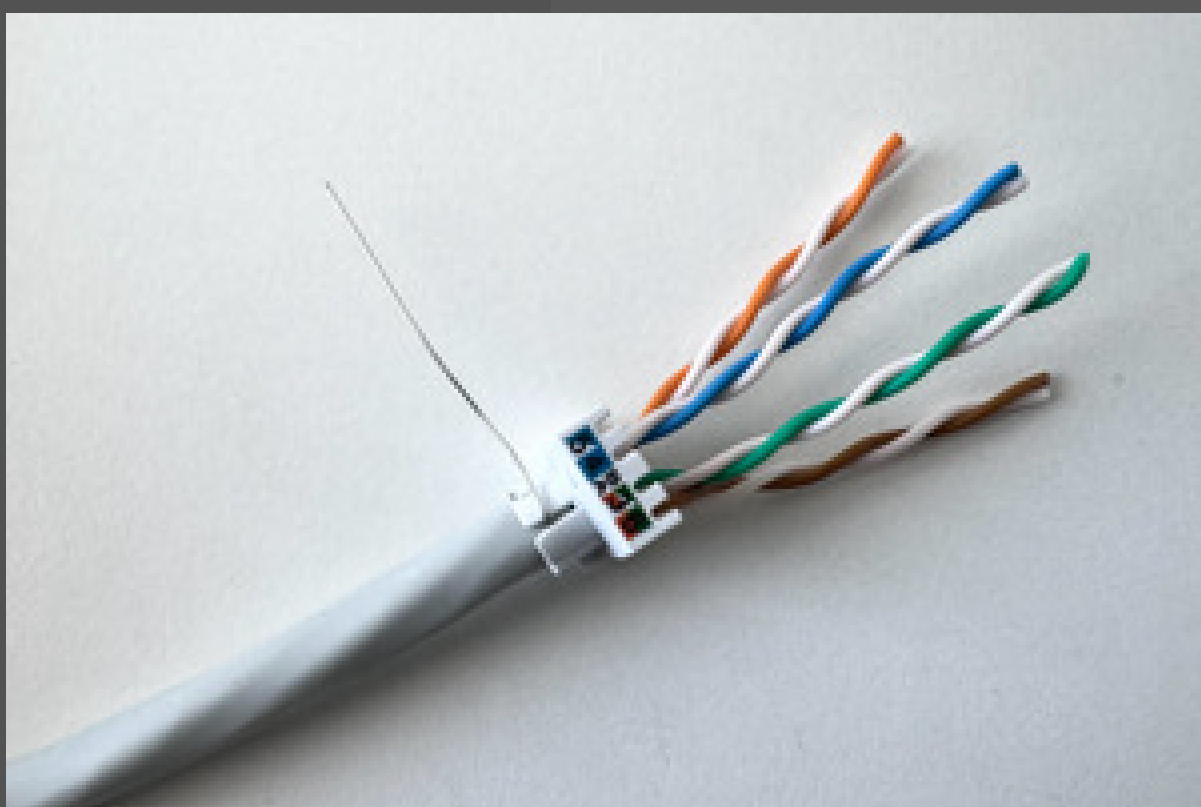
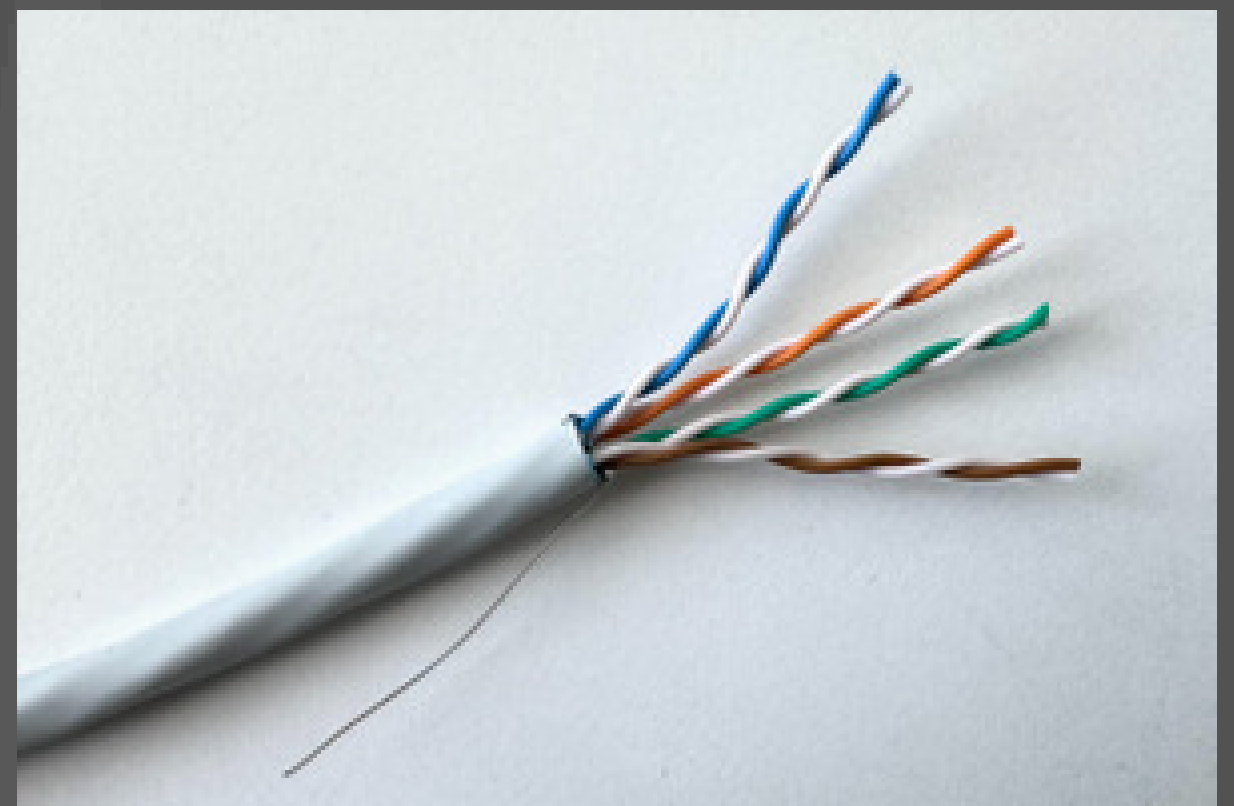


HOW TO INSTALL SOLARIX RAL KEYSTONES



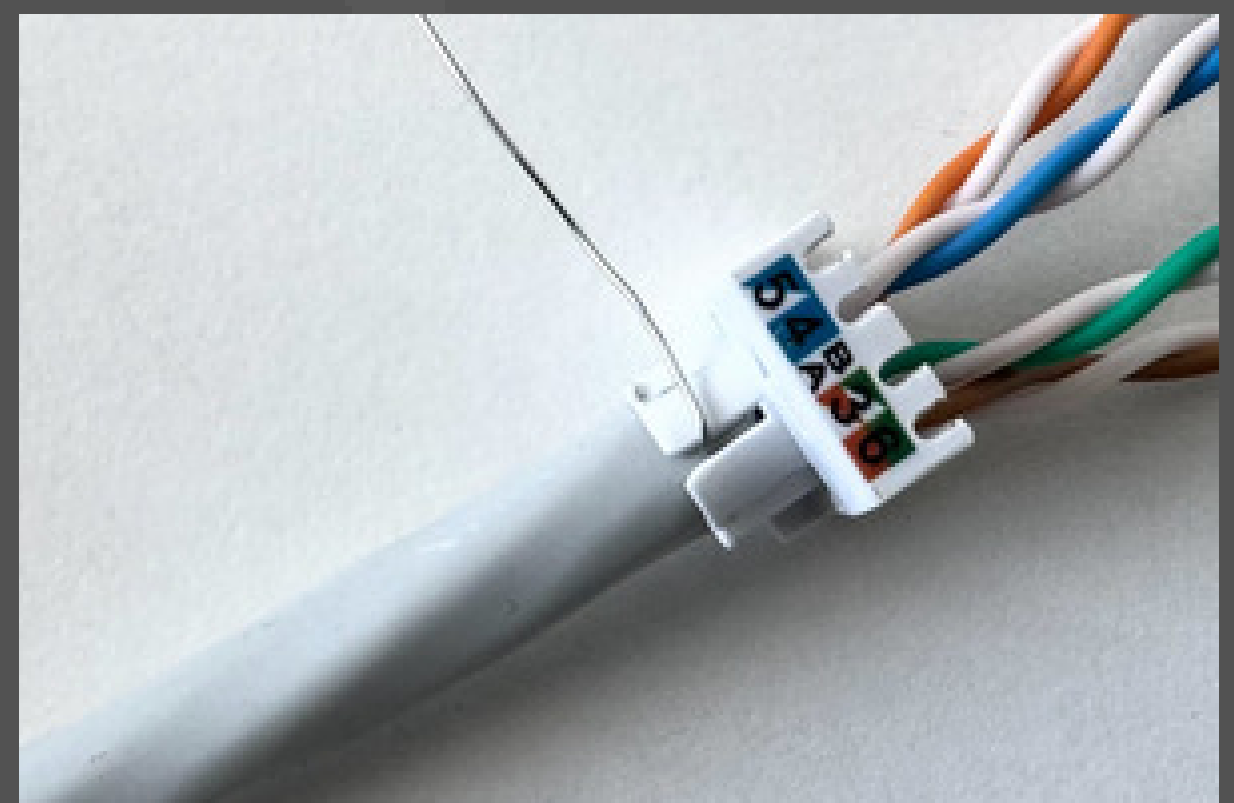
Carefully remove approximately **30 mm** of the cable sheath using the stripping tool. Ensure **no burrs** from the sheath remain on the cable.

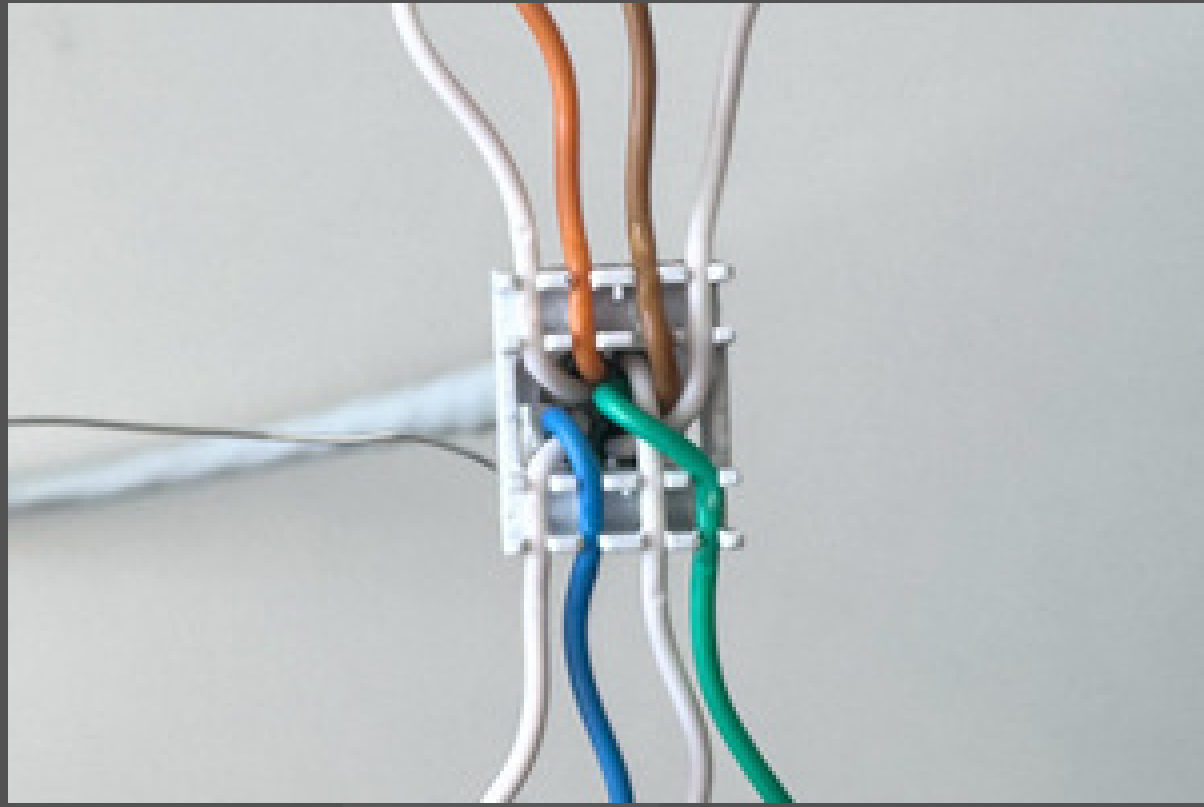
Depending on the type of shielded cable, unwrap the pairs from the shielding or foils and **carefully trim** the foils as close to the cable sheath as possible, ensuring no fraying near the cable jacket. Take care **not to damage** the conductors or grounding wire. Fold the grounding wire (or braid for S/FTP cables) back along the sheath.



Place the white **SECURE CAP** onto the cable. Arrange the cable pairs according to the **colour wiring scheme** on the cap. Push the cap firmly towards the cable jacket until you feel **resistance** from the internal **cap stopper**.

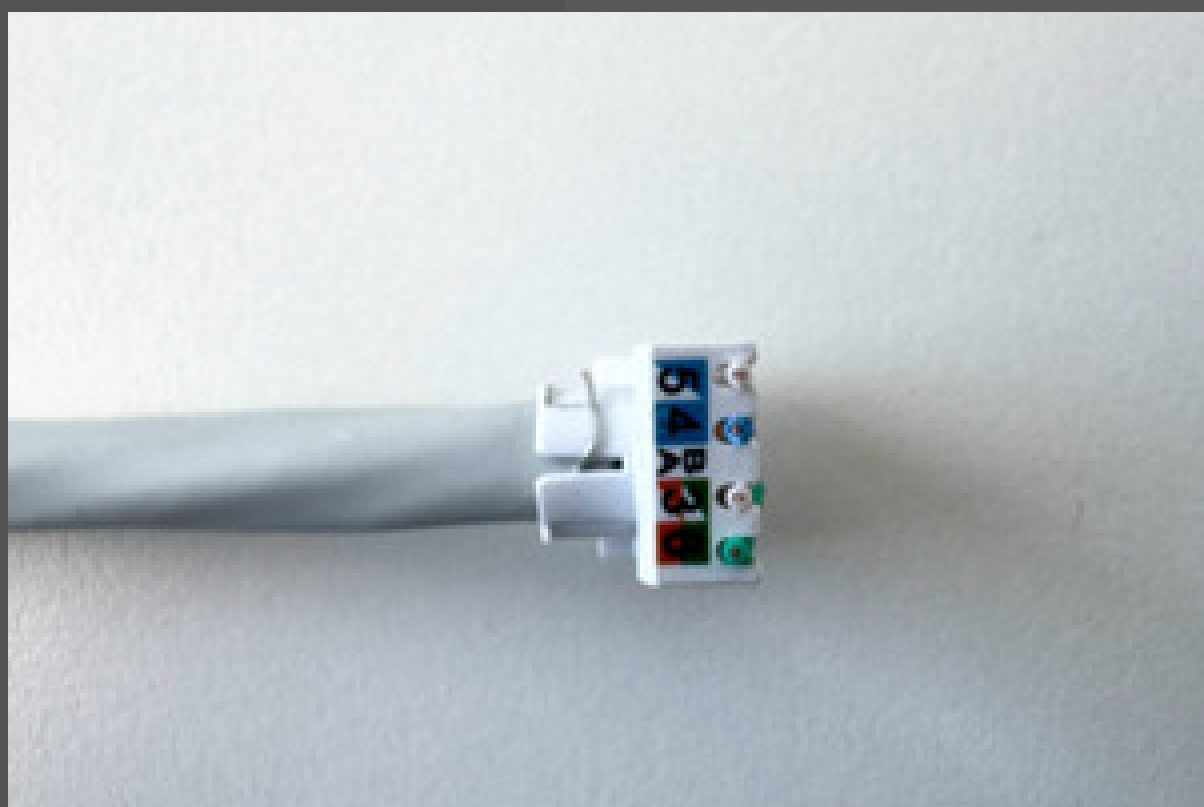
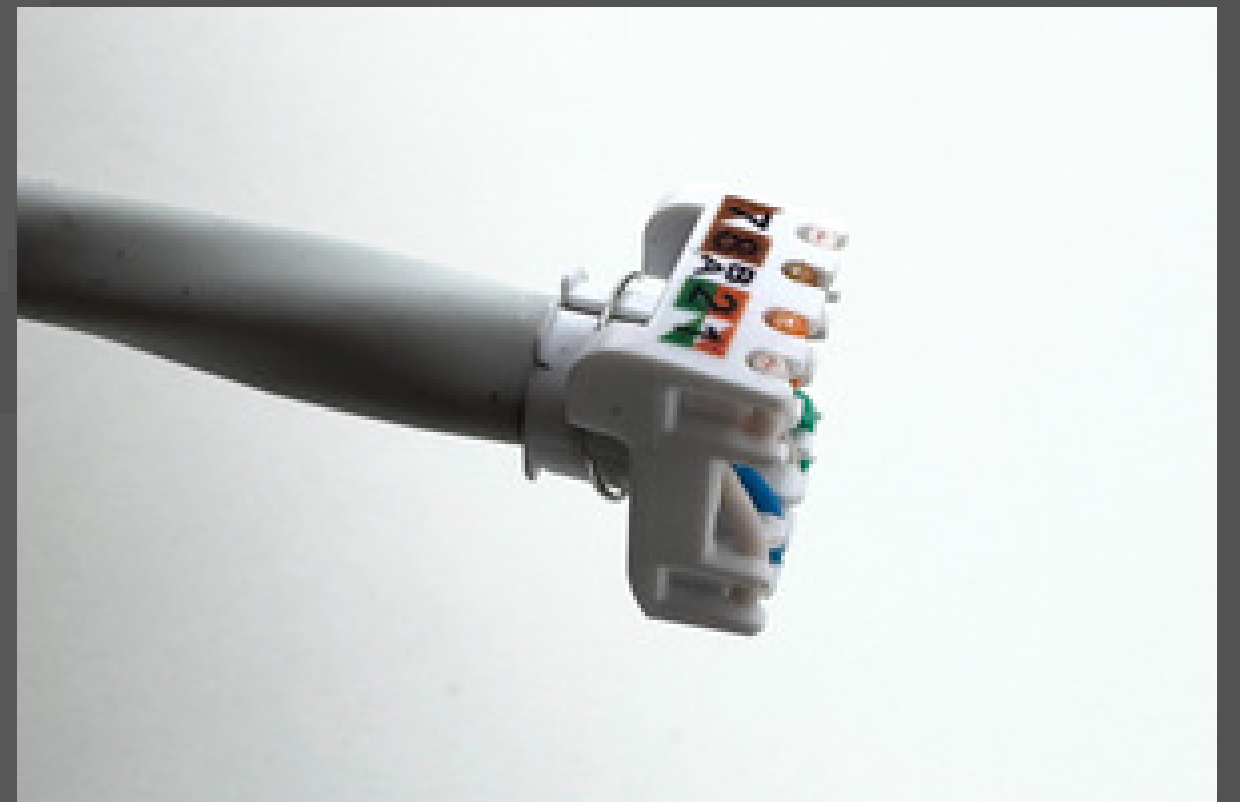
Insert **the grounding wire** (or braid for S/FTP cables) into one of the two **gaps** in the plastic cap, located at either **the top** or **bottom** of the cap neck, as shown in the picture.





Separate the wires into **the slots** on the cap, following **the correct wiring scheme** (either T568A or T568B), which is colour-coded on the cap. Each wire must be **securely seated** in both guide grooves of the cap.

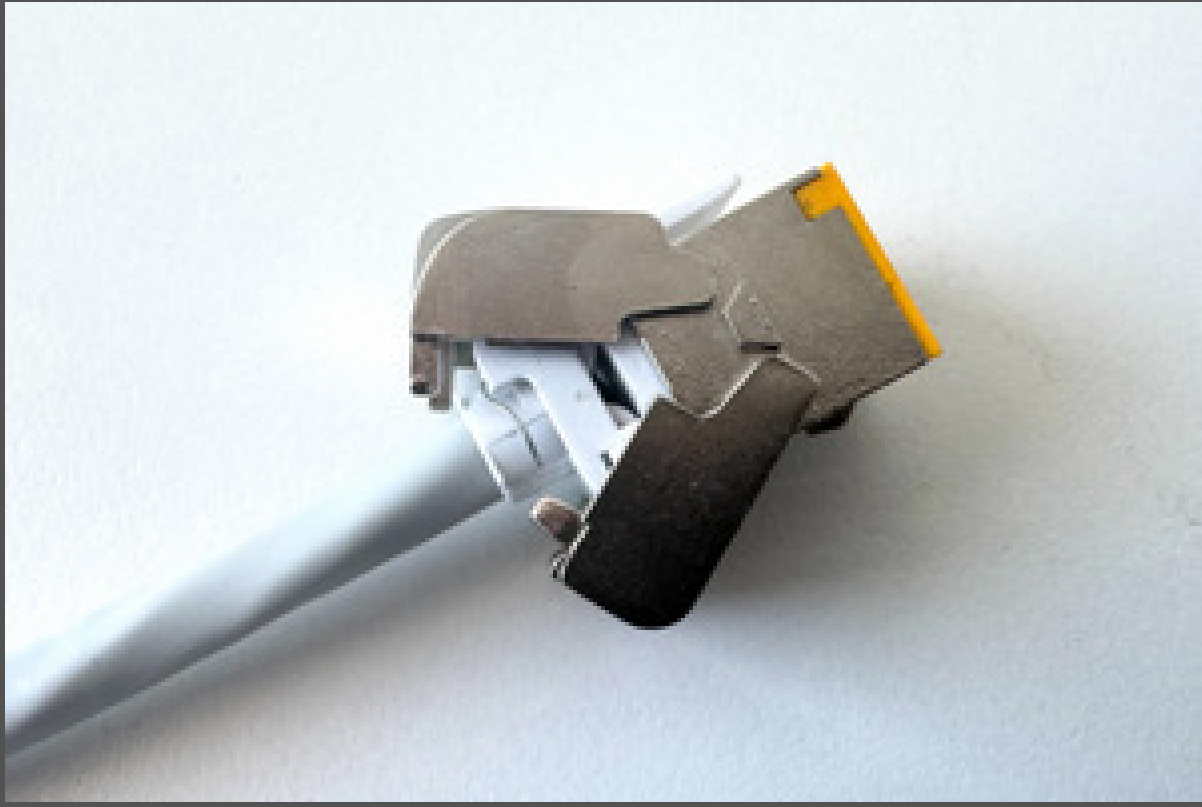
Using **precision side cutters**, trim the excess wires **as close to the cap as possible**. The wires should not extend beyond the cap by more than **0.3–0.5 mm** (ideally even less) and must remain firmly seated in **both guide grooves**. Ensure the wires are not above **the level** of the grooves or the cap itself. These steps are **crucial** for the reliable **insertion** and **closure** of the keystone.



Wrap the grounding wire (or braid for S/FTP cables) tightly **around the neck** of the SECURE CAP and trim it to a length of **7–15 mm**. The grounding wire should sit snugly against the cap neck without **obstructing** the keystone jaws during closing. It will connect to the **GROUND LOCK** mechanism of the keystone on either the top or bottom of the cap, depending on the wire's length.

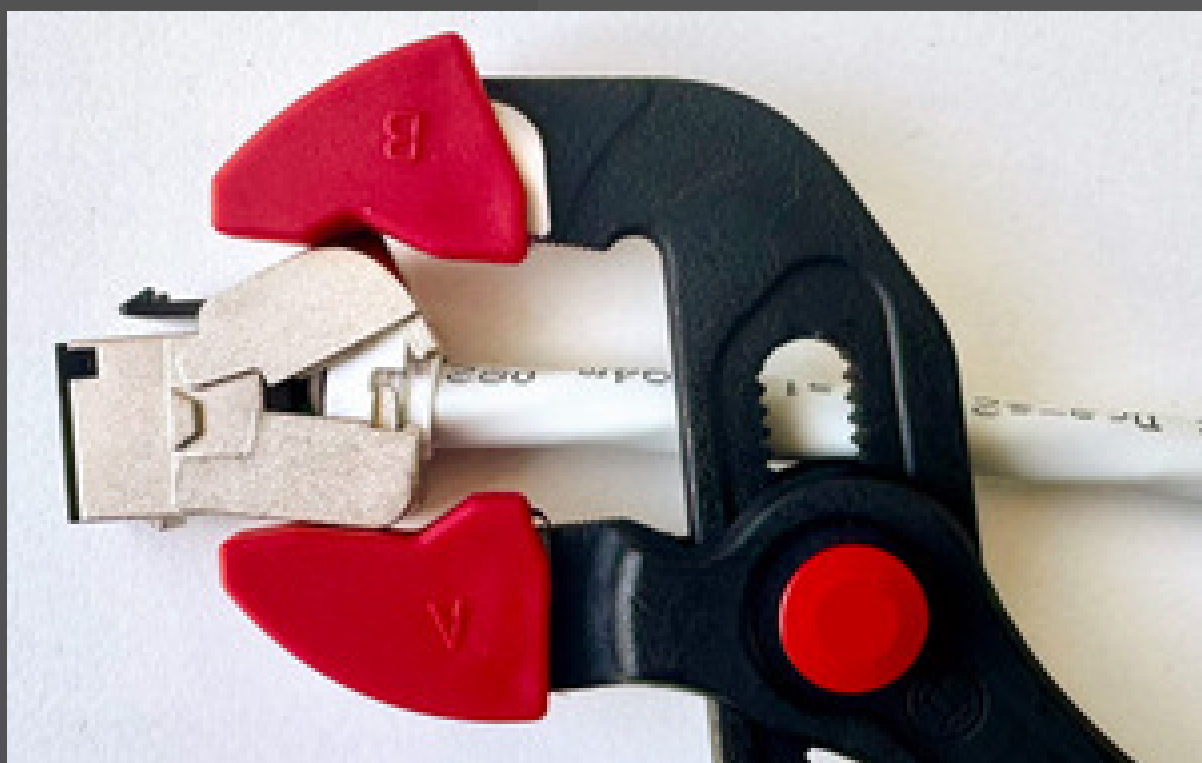
Fit the cap **as tightly as possible**, ensuring the wires are **perpendicular** to the keystone body. Align the cap with **the guide arrows** on both the keystone and the cap so that the arrows point in **the same direction**.





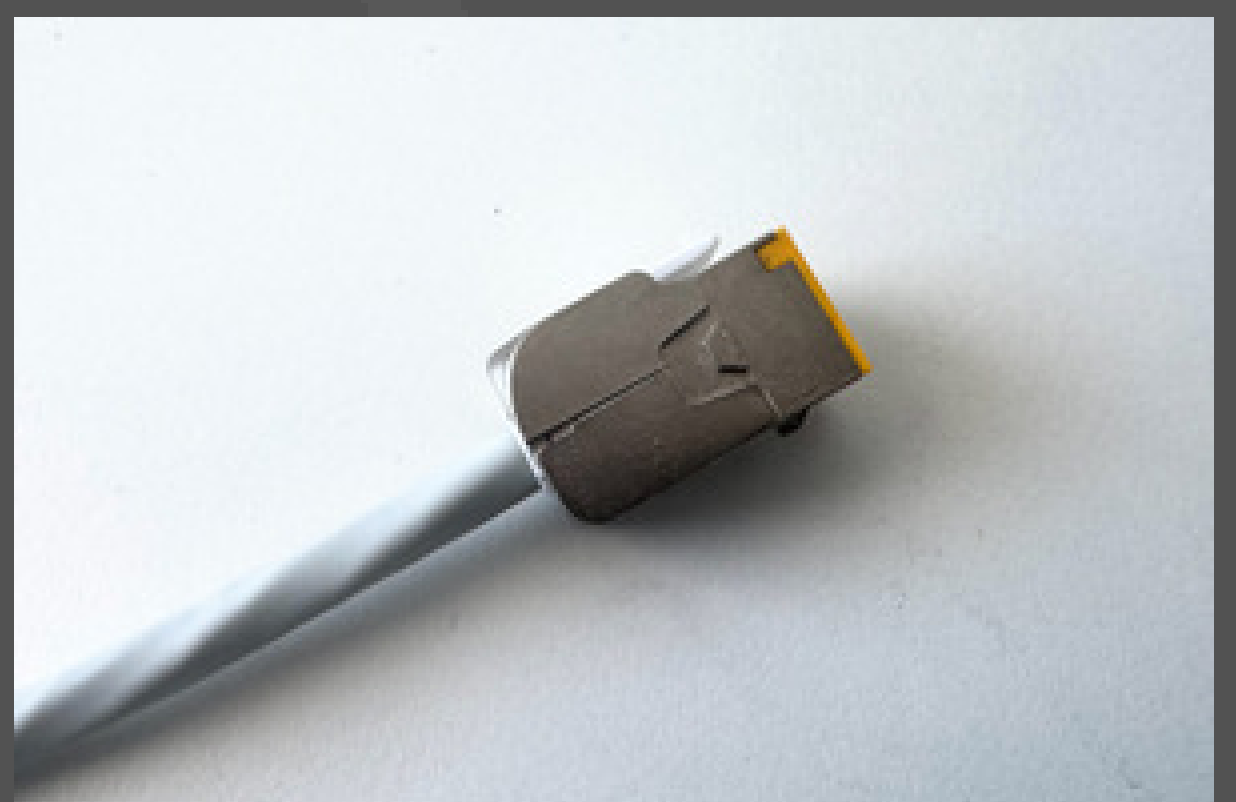
Then **press** the jaws of the keystone firmly together while pushing the cable cap into the keystone. The wire cap will advance into the blades of the keystone's tool-less mechanism.

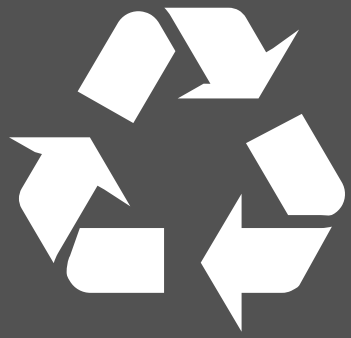
Ensure that the cap **does not tilt** to either side (left or right) when closing the keystone. Both jaws of the keystone, especially the upper one, must apply **even pressure** to the cap at all times. This is crucial for proper function.



To achieve a final and secure closure of the keystone, use **siko pliers** (or a similar method). Apply pressure **gradually** and **evenly** to the jaws. Ensure the jaws of the keystone are brought as close together as possible for a **proper closure**. This will ensure the wires are properly **terminated** and **the grounding wire** is connected to the GROUND LOCK mechanism.

If you have successfully completed all the above steps, the Solarix keystone installation is **complete**. When placing the keystone into the patch panel or socket, ensure that you observe **the minimum bending radius** specified for data cables (i.e., 4 times the cable diameter; see EN 50174-2, section 4.4.1.2). Prepare **the cable routes** and their individual components **in advance**, ensuring they are **sufficiently sized**.





If you have any **packaging** or **leftover parts** from the keystone installation (e.g., unused coloured masks), please dispose of them in an **environmentally friendly manner** by placing them in the appropriate sorted waste bins.

NEED SOME ADVICE?

If you **need help** installing this product, please **contact us** at info@solarix.cz or by phone at +420 840 505 555. This document serves as a user manual.

Výrobce/Producer/Producent/Výrobca:

INTELEK LTD

Ericha Roučky 1291/4, Brno, 627 00, CZ

+420 840 505 555

www.solarix.info • info@solarix.info

