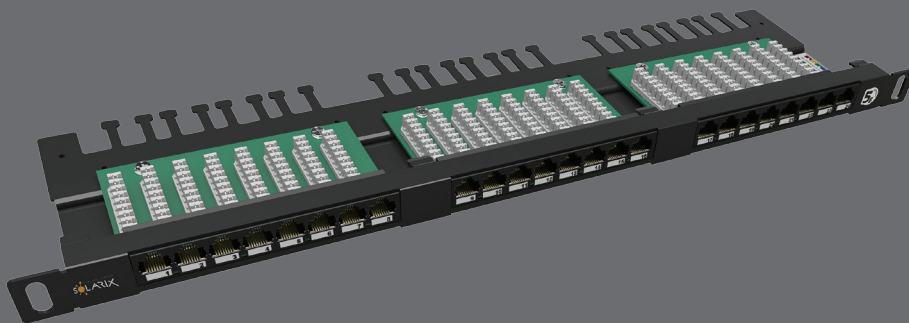


19" high-density patch panel Solarix 24x RJ45 CAT5E UTP 0.5U



Product number:
24000144

Type number:
SX24HD-5E-UTP-BK

EAN barcode:
8595684700039



Key features

- Quality 19" unshielded high-density category 5E/Class D patch panel
- Designed for ethernet protocols, including 2.5GBASE-T and 5GBASE-T*
- With management bar
- 24 ports RJ45 with 50 pin gold contact plating
- Dual IDC termination block 110/Krone type (both T568A and T568B wiring)
- The patch panel meets the ISO/IEC 11801, EN 50173, and ANSI/TIA 568.2-D cabling standards
- The colour of the patch panel is black
- 0.5U size (i.e. two HD patch panels easily fit into 1U position)

Cabling standards

General standards
Product standards

EN 50173-1, EN 50173-2, ISO/IEC 11801-1, ISO/IEC 11801-2, ANSI/TIA 568.2-D
EN 60603-7-2

Supported protocols

	10BASE-T	100BASE-TX	1000BASE-T	2.5GBASE-T	5GBASE-T
Supported by the SX24HD-5E-UTP-BK patch panel	YES	YES	YES	YES*	YES*

*) For the 2.5GBASE-T and 5GBASE-T protocols, the operability success and distance achieved may vary depending on the type and quality of installation.

Supported PoE

	802.3af	802.3at
PoE type	Type 1	Type 2
Maximum current	350 mA	600 mA
No. of pairs used	2	2
Supported by the SX24HD-5E-UTP-BK patch panel	YES	YES



+420 840 505 555 • info@solarix.cz
www.solarix.cz

Physical parameters

Patch panel construction	UTP
Number of ports	24x RJ45 8p8c
Min. port lifetime	1000 connections/disconnections
Contacts plating	50 µin gold
Termination block type	dual 110/Krone
Number of terminations	200
Size and type of conductor	AWG 26 – 22, solid wire
Material of non-metallic parts	FR plastic according to UL94-0
Patch panel body colour	black
Number of units	0.5U
Height	22 mm
Width	484 mm
Depth	101.5 mm

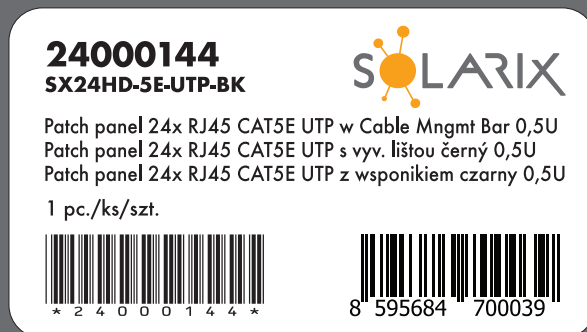
Operation and storage

Max. operating humidity	93%
Operating temperature	-10 to 60 °C
Storage temperature	-40 to 70 °C

Logistic parameters

Patch panel packaging size (h x w x d)	35 mm x 540 mm x 125 mm, carton box
Weight	0.9 kg
Included in the package	1 x patch panel, 4x M6 mounting kit, 24x plastic strap
Master packaging	14x panel
Master packaging size (h x w x d)	240 mm x 550 mm x 270 mm, carton box
Batch marking	yes (on the product, its packaging and on the transport master box)
Batch and product numbers barcode	IDAutomation Code 39, ANSI/ISO/AIM specification
EAN code type	EAN-13

Patch panel label



Solarix warranties

Standard warranty	5 years
System warranty	30 years



Related products

Product Number	Type Number	Description
27655141	SXKD-5E-UTP-PVC	Installation Cable Solarix CAT5E UTP PVC Eca 305m/box
27655150	SXKD-5E-UTP-PVC	Installation Cable Solarix CAT5E UTP PVC Eca 500m/box
27655151	SXKD-5E-UTP-PVC	Installation Cable Solarix CAT5E UTP PVC Eca 1000m/reel
27724130	SXKD-5E-UTP-PVC	Installation Cable Solarix CAT5E UTP PVC Eca 100m/box
27724119	SXKD-5E-UTP-LSOH	Installation Cable Solarix CAT5E UTP LSOH Dca-s1,d2,a1 305m/box
27724125	SXKD-5E-UTP-LSOH	Installation Cable Solarix CAT5E UTP LSOH Dca-s1,d2,a1 500m/box
27655171	SXKD-5E-UTP-LSOH	Installation Cable Solarix CAT5E UTP LSOH Dca-s1,d2,a1 1000m/reel
27724131	SXKD-5E-UTP-LSOH	Installation Cable Solarix CAT5E UTP LSOH Dca-s1,d2,a1 100m/box
27655191	SXKD-5E-UTP-PE	Installation Cable Solarix CAT5E UTP PE Fca Outdoor 305m/box
27655196	SXKD-5E-UTP-PEG	Installation Cable Solarix CAT5E UTP PE Fca GEL-FILLED Outdoor 305m/box