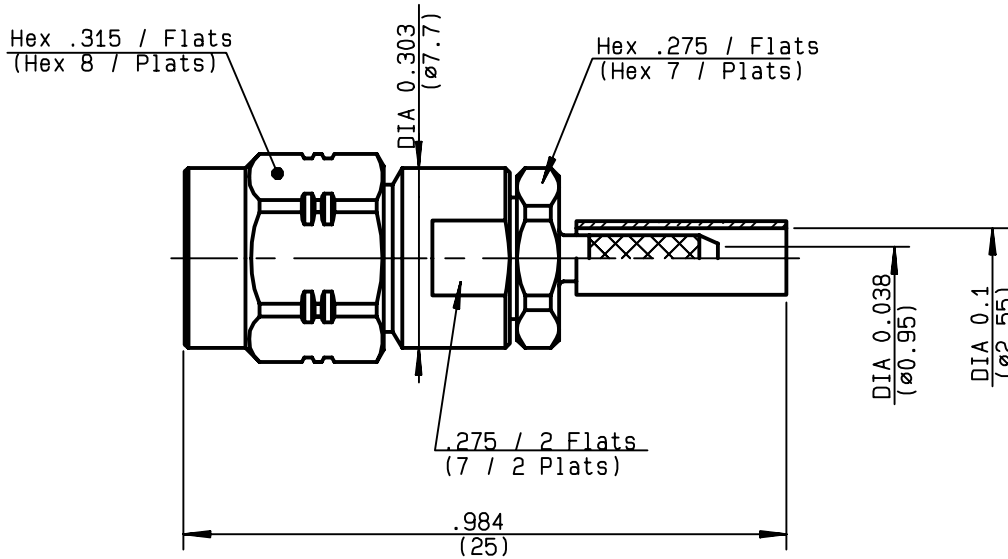


**STRAIGHT PLUG CRIMP TYPE  
CABLE 2/50 S**

**R124.069.123**  
**SERIES SMA-COM**



NOMINAL IMPEDANCE	<b>50</b> Ω
FREQUENCY RANGE	<b>0-12.4</b> GHz
TEMPERATURE RATING	<b>-65/+165</b> °C
V.S.W.R	<b>*1.15</b> + <b>.02</b> x F(GHz)Maxi
RF INSERTION LOSS	<b>0.05</b> √F(GHz) dB Maxi
VOLTAGE RATING	<b>170</b> Veff Maxi
DIELECTRIC WITHSTANDING VOLTAGE	<b>500</b> Veff Mini
INSULATION RESISTANCE	<b>5000</b> MΩMini
HERMETIC SEAL	<b>NA</b> Atm.cm <sup>3</sup> /s
LEAKAGE (pressurized only)	<b>NA</b>
MECHANICAL DURABILITY	<b>100</b> Cycles
WEIGHT	<b>4.64</b> gr
SPECIFICATION	

CABLES : **KX 21**  
**RG 178**  
**RG 178 LC**  
**RG 196**

OTHERS CHARACTERISTICS

	<b>* VSWR max: up to 3 GHz</b>
CABLE RETENTION	<b>45</b> N Mini
CENTER CONTACT RETENTION	
Axial force - mating end	<b>27</b> N Mini
Axial force - opposite end	<b>27</b> N Mini
Torque	<b>NA</b> cm.N Mini
RECOMMENDED TORQUES	
Mating	<b>60</b> cm.N
Panel nut	<b>NA</b> cm.N
Clamp nut	<b>90</b> cm.N

CONNECTOR PARTS:	MATERIALS	FINISH	(all values are given ) in micrometers
BODY	BRASS	GOLD 0.2 OVER NICKEL 2	
OUTER CONTACT			
CENTER CONTACT	BRASS	GOLD 1.3 OVER COPPER 2.5	
INSULATOR	PTFE	-	
GASKET		-	
OTHERS PIECES	BRASS	GOLD 0.2 OVER NICKEL 2	

ISSUE	CREATION DATE	FILE PART-NUMBER
<b>9847A00</b>	<b>08/12/1997</b>	<b>EPC 97-03</b>



**RADIALL**®

TRIQUES

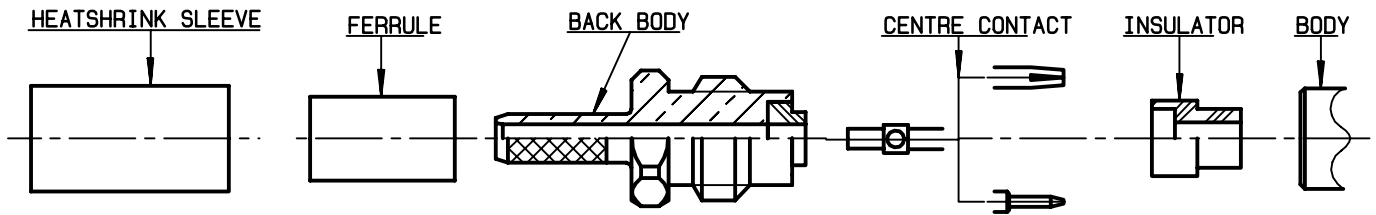
The information given here is subject to change without notice.  
Design changes may be in order to improve the product .

*Connect to the future*



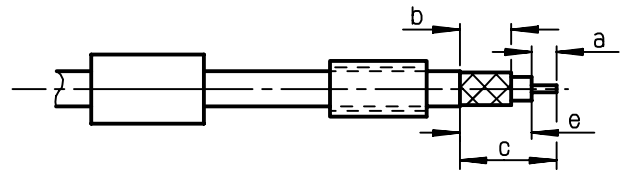
**R124.069.123**

ISSUE 9847A00 SERIES SMA-COM



①

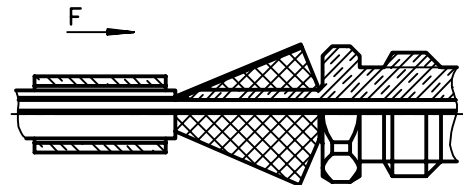
Slide heatshrink sleeve (R280.637.010-Option) and ferrule onto cable.  
Strip the cable .  
-



Stripping	a	b	c	d	e
inch	0.138	0.276	0.531	0	0.394
mm	3.5	7	13.5		10

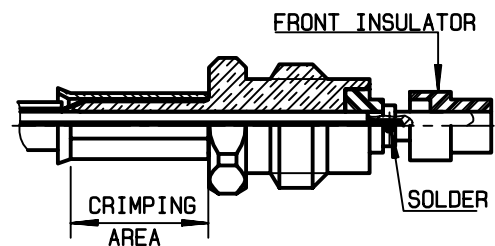
②

Fan the braid.  
Slide the back body between dielectric and braid.  
Slide ferrule over the braid (In direction F).  
-  
-



③

Crimp the ferrule with crimping tool R282.211.000 ( Hex. : .105 )(2.67) or crimping tool R282.293.000 ( M22520/5-01 ) + dies R282.235.003 ( M22520/5-03 )  
Cut excess of braid if necessary .  
Mount and solder the centre contact.  
Mount the front insulator.  
-



④

Screw sub-assembly into the connector body.  
Recommended coupling torque: 90Ncm.  
Slide sleeve over ferrule and heatshrink in place (Option).  
-  
-

