

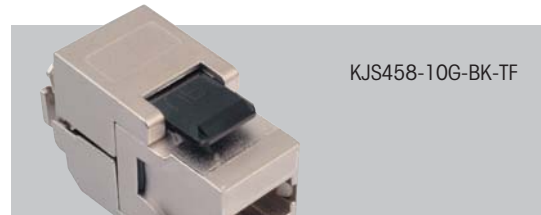


# Category 6A Keystone Jacks

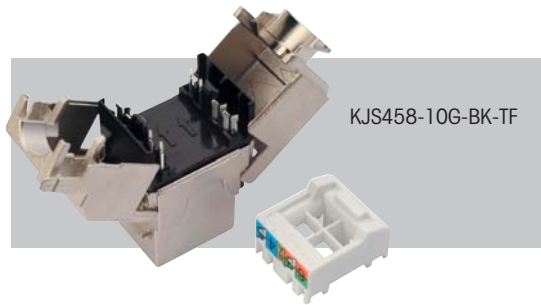
SignalMax Category 6A shielded keystone jacks have been specifically designed to meet the needs for high-bandwidth applications, such as 10GBaseT. These SignalMax components have a very slim profile and thus can easily fit in most high density applications. The 10G keystones are engineered to exceed the Category 6A permanent link as well as channel requirements and are fully tested up to 500 MHz. The compliancy of these SignalMax keystones with the latest Category 6A and Class E<sub>A</sub> standards has been authorized by an independent testing laboratory GHMT. SignalMax Category 6A keystone jacks support T568A and T568B wiring for maximum flexibility using an easy to read colour-code wiring label. The keystones can be terminated by standard 110 as well as Krone termination tools or they can be purchased as tool free. Their new contact design provides enhanced plug to jack connection integrity and protects against damage caused by insertion of 4 or 6 position plugs. The contacts are rated for 1,000 plug insertions.



KJS458-10G



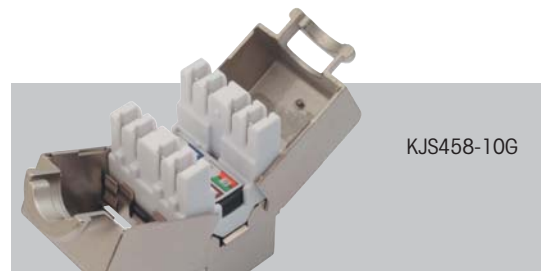
KJS458-10G-BK-TF



KJS458-10G-BK-TF



KJS458-10G



KJS458-10G

## SPECIFICATIONS

- Number of Ports: 1 x RJ45
- Life Cycle: 1,000 plug insertions
- Contact Material: 50µ gold and 100µ nickel
- Termination Block: tool free or dual 110/Krone 8p8c
- Termination Block Life Cycle: 200 terminations
- Wire: AWG 26-22
- Other Material: FR according to UL94V-0
- Storage Temperature: -40° – 70°C
- Operation Temperature: -10° – 60°C
- Max. Humidity Operation: 93%

### Category 6A Shielded Keystone Jack

PART NO.	DESCRIPTION
KJS458-10G	Shielded Keystone Jack, Category 6A, Universal Wiring T568A/B
KJS458-10G-BK-TF	Shielded Keystone Jack, Category 6A, Tool Free