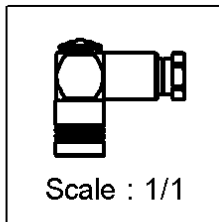
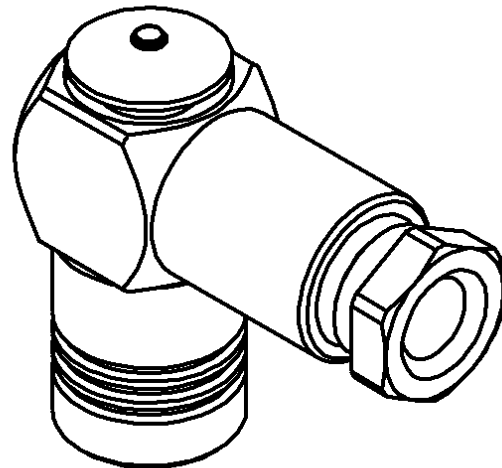
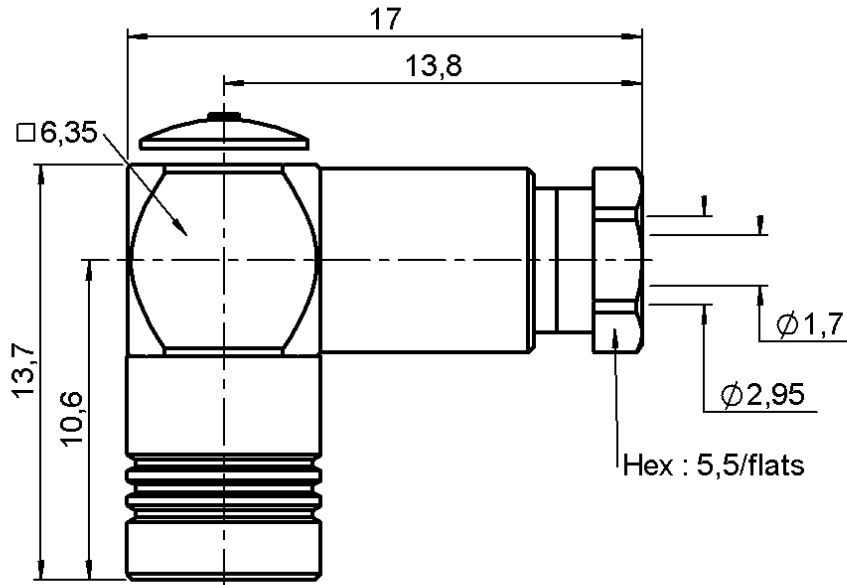


RIGHT ANGLE PLUG CLAMP TYPE

R114.165.133

CABLE 2.6/50+75 S

Series : SMB



All dimensions are in mm.



COMPONENTS	MATERIALS	PLATINGS (µm)
BODY	BRASS	GOLD 0.2 OVER NICKEL 2
CENTER CONTACT	BERYLLIUM COPPER	GOLD 1.3 OVER NICKEL 2
OUTER CONTACT	BERYLLIUM COPPER	GOLD 0.5 OVER NICKEL 2
INSULATOR	PTFE	
GASKET	-	
OTHERS PARTS	BRASS	GOLD 0.2 OVER NICKEL 2
-	-	-
-	-	-

Issue : 0046 C

In the effort to improve our products, we reserve the right to make changes judged to be necessary.



RIGHT ANGLE PLUG CLAMP TYPE

R114.165.133

CABLE 2.6/50+75 S

Series : SMB

PACKAGING

Standard	Unit	Other
100	'W' option	Contact us

SPECIFICATION

ELECTRICAL CHARACTERISTICS

Impedance		50 Ω
Frequency		0-4 GHz
VSWR	1.35 +	0.040 x F(GHz) Maxi
Insertion loss		0.50 √F(GHz) dB Maxi
RF leakage	- (57 - F(GHz) dB mini
Voltage rating		335 Veff Maxi
Dielectric withstanding voltage		1000 Veff mini
Insulation resistance		1000 MΩ mini

CABLE ASSEMBLY

Stripping	a	b	c	d	e	f
mm	2.00	1.00	7.00	3.18	5.00	0.00

Assembly instruction :

Recommended cable(s)

KX 22A
RG 188
RG 179
RG 187
RG 316

MECHANICAL CHARACTERISTICS

Center contact retention		
Axial force – Mating end		10 N mini
Axial force – Opposite end		10 N mini
Torque		NA N.cm mini

Cable retention

- pull off **110** N mini
- torque **NA** N.cm

TOOLING

Part Number	Description	Hexagon
.	.	.

Recommended torque		
Mating		NA N.cm
Panel nut		NA N.cm
Clamp nut		63.70 N.cm
A/F clamp nut		5.500 mm

OTHERS CHARACTERISTICS

Mating life		500 Cycles mini
Weight		4.800 g

ENVIRONMENTAL

Operating temperature		-65/+165 °C
Hermetic seal		NA Atm.cm3/s
Panel leakage		NA

Issue : 0046 C

In the effort to improve our products, we reserve the right to make changes judged to be necessary.



RIGHT ANGLE PLUG CLAMP TYPE

R114.165.133

CABLE 2.6/50+75 S

Series : SMB

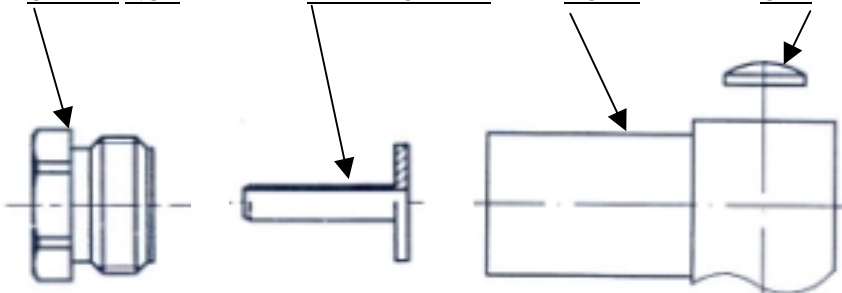
COMPONENTS

CLAMP NUT

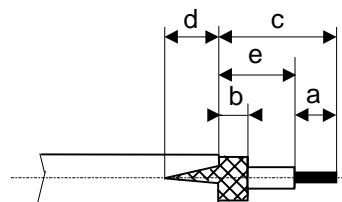
BRAID-CLAMP

BODY

CAP

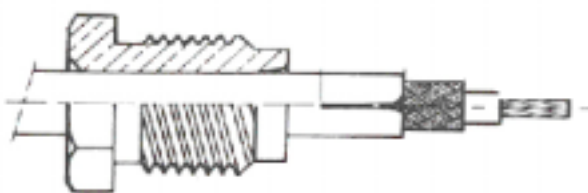


STRIPPING DIMENSIONS



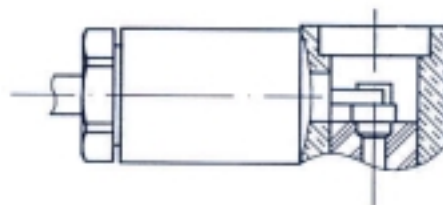
1

Mount the clamp nut
Strip off the cable then make 2 slits in the sheat 180°
apart longitudinally.



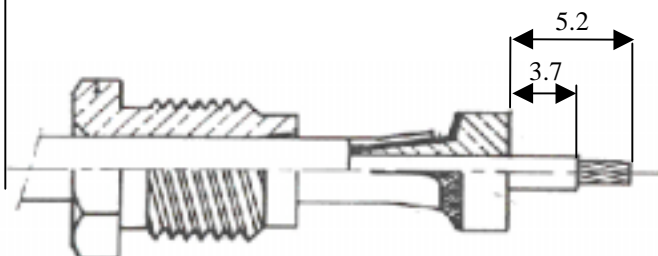
3

Screw sub-assembly into the connector body with the
adapted wrench.
Recommended coupling torque (see connector TDS).
Solder the inner conductor.



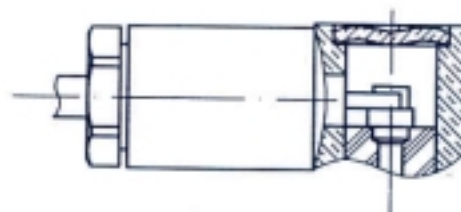
2

Mount the braid clamp
Strip off the cable



4

Place the cap into the body.
Press on the cap flush or slightly below the surface of
the body assembly.



Issue : 0046 C

In the effort to improve our products, we reserve the right to make changes judged to be necessary.

