
**4-Port 10/100M Internet
Broadband Router
with USB Printer server
User Guide**

FCC Statement

This device complies with FCC Rules Part 15. Operation is subject to the following two conditions:

1. This device may not cause harmful interference, and
2. This device must accept any interference received, including interference that may cause undesired operation.

This equipment has been tested and found to comply with the limits for a Class B digital device, pursuant to Part 15 of the FCC Rules. These limits are designed to provide reasonable protection against harmful interference in a residential installation. This equipment generates, uses and can radiate radio frequency energy and, if not installed and used in accordance with manufacturer's instructions, may cause harmful interference to radio communications. However, there is no guarantee that interference will not occur in a particular installation. If this equipment does cause harmful interference to radio or television reception, which can be determined by turning the equipment off and on, the user is encouraged to try to correct the interference by one or more of the following measures:

1. Re-orient or relocate the receiving antenna.
2. Increase the separation between the equipment and receiver.
3. Connect the equipment to an outlet on a circuit different from that to which the receiver is connected.
4. Consult the dealer or an experienced radio/TV technician for help.

WARNING! Any changes or modifications to this product not expressly approved by the manufacturer could void any assurances of safety or performance and could result in violation of Part 15 of the FCC Rules.

CE Declaration of conformity

This equipment complies with the requirements relating to electromagnetic compatibility, EN 55022 class B for ITE and EN 50082-1. This meets the essential protection requirements of the European Council Directive 89/336/EEC on the approximation of the laws of the Member States relating to electromagnetic compatibility.

Trademarks

All company, brand, and product names are trademarks or registered trademarks of their respective companies.



To avoid the potential effects on the environment and human health as a result of the presence of hazardous substances in electrical and electronic equipment, end users of electrical and electronic equipment should understand the meaning of the crossed-out wheeled bin symbol. Do not dispose of WEEE as unsorted municipal waste and have to collect such WEEE separately.

Contents

1:Introduction	4
1.1 Features & Benefits	4
1.2 Technical Specification	5
1.3 Package Contents	6
1.4 Glossary	6
2: Hardware Installation	9
2.1 Product Description	9
2.1.1 Front Panel	9
2.1.2 LEDs	9
2.1.3 Rear Panel	10
2.2 Getting Started	10
2.2.1 System Requirement	10
2.2.2 Before Installation	10
2.2.3 Setting Hardware Connection	11
2.2.4 Configure your computer	12
3: Using Configuration Menu	26
3.1 Basic Setup	28
3.2 DHCP Setting	33
3.3 URL Access	33
3.4 IP Access	35
3.5 Virtual Server	36
3.6 DMZ Host	38
3.7 Device Administration	39
3.8 Status Monitor	40
3.9 RIP	40
3.10 Static Routing	42
3.11 Dynamic DNS	43
3.12 Special Application	44
3.13 Statistics	45
3.14 Security Setting	46
3.15 Connection Log	47
3.16 Time Setting	48
3.17 UPnP	49
4: Install Printer Server	50
5: Trouble-Shooting	51
6: TCP/IP Port List for Internet Service	52

1. Introduction

This Broadband Router includes **4 10/100Mbps switch** ports and a **USB printer port**. It provides a complete solution for **Internet surfing and office** resources sharing. This **4 Port Internet Broadband Router** provides a simple, efficient, and cost-effective solution for **LAN/Internet**, especially for **SOHO (Small Office/Home Office)** users to share the Internet resources simultaneously using one **ISP (Internet Service Provider)** account. It also supports a wide range of LAN-WAN connectivity media. There are the **DSL** modem, cable modem, and Ethernet **10/100M** connections. Another feature is that the 4 Port Internet Broadband Router makes it easier and more economical to expand and segment your LAN. As a result, you would never have a nightmare with IP address depletion problem.

In addition, this broadband router built-in **USB Printer Server**, allowing users can share networked printer anytime. Besides, with firewall function, the 4 Port Internet Broadband Router can always protect your LAN from outsider's break-ins and yet expose your local servers such as **Web Server, E-mail Server, FTP server, for remote access by Virtual Server Mapping or DMZ setting**.

1.1 Features & Benefits

- Conforms to **IEEE 802.3, IEEE 802.3u and IEEE 802.3x** standards
- Provides **1 10/100M WAN interface (RJ-45)** to connect with **DSL or cable modem**
- Provides 4 10/100M switch LAN interfaces to connect your local area network
- Provides 1 USB 1.1 Printer Server Port to connect USB Printer
- Embedded with DHCP Server & Printer Server
- Supports **DDNS (Dynamic DNS) & Virtual Server**
- Supports **PPPoE, PPTP Client**
- Built-in **Network Address Translation Accelerator (NATA)** provides hardware NAT acceleration
- Firewall function, like **DoS Attack** prevented to protect your **PCs** from outside intruders
- Configurable through any networked **PC's web browser and Remote Management**
- Simultaneously acts as either a **DHCP** server on the **LAN and a DHCP** client on the WAN
- By using virtual server, outside users will be able to access the internal **IP servers** via Internet.
- Administrators can block specific interior users' Internet access
- **URL Blocking:** Prevent specific web sites form interior user's access
- Supports **RIP I & II**, Static Routing
- Supports **PPTP, IPSec** pass through

1.2 Technical Specification

Standards	IEEE 802.3 10BASE-T / IEEE 802.3u 100BASE-TX USB 1.1	
Protocol	CSMA/CD, TCP/IP, PPPoE, PPP, PPTP Client, DHCP Client, DHCP Server, RIP I/RIP II	
Topology	Star	
Media	10BASE-T: UTP/STP Cat. 3, 4 or 5 100BASE-TX: UTP/STP Cat. 5	
No. of Port	WAN: 1x 10/100M RJ-45 port LAN: 4 x 10/100M RJ-45 ports Printer Port: 1 x USB 1.1 port Reset: 1 x Reset Button	
NAT Accelerator Engine	Yes, 64 Entries	
Flash/SDRAM	1MB/4MB	
MAC Address	1K	
Auto MDI/MDIX	Yes	
LAN Switching Method	Store and forward	
PPPoE/PPTP Client/Fixed IP	Yes	
DHCP Client	Yes	
Port Triggering	Yes	
DMZ Host	2 way access for LAN PC	
Routing	RIP I & II, Static routing	
Firewall	DoS Attack prevented Hide Public IP Address Function URL Blocking IP Port Filtering	
VPN	PPTP, IP Sec pass through	
Management	Local Web-based configuration, Remote Management	
LED Indicator	Power, Link/Act, USB	
Environmental	Temperature	Humidity
Temperature	Operation 0 °C~50°C	10%~90%
Humidity	Storage -20°C ~70°C	10%~90%
Dimension	165 ×87 ×30mm	
Power Consumption	5.4W Max.	
Power Supply	AC 9V, 600mA	
Conformance	FCC class B, CE mark class B	

1.3 Package Content

- One 4 Port Internet Broadband Router
- One Power adapter
- One **CD-ROM**
- Quick Install Guide

1.4 Glossary

• LAN – Local Area Network

Local Area Networking (**LAN**) is the term used when connecting several computers together over a small area such as a building or group of buildings. LAN's can be connected over large areas. A collection of LAN's connected over a large area is called a Wide Area Network (**WAN**).

A **LAN** consists of multiple computers connected to each other. There are many types of media that can connect computers together. The most common media is **CAT5 cable (UTP or STP twisted pair wire.)** On the other hand, wireless networks do not use wires; instead they communicate over radio waves. Each computer must have a **Network Interface Card (NIC)**, which communicates the data between computers. A **NIC** is usually a 10Mbps network card, or 10/100Mbps network card, or a wireless network card.

Most networks use hardware devices such as hubs or switches that each cable can be connected to in order to continue the connection between computers. A hub simply takes any data arriving through **each port and forwards the data** to all other ports. A switch is more sophisticated, in that a switch can determine the destination port for a **specific piece of data**. A switch minimizes network traffic overhead and speeds up the communication over a network.

• What is Router?

A router is a device that forwards data packets from a source to a destination. Routers forward data packets using **IP addresses** and not a **MAC** address. A router will forward data from the Internet to a particular computer on your **LAN**. A router also determines the best route that data packets should follow to ensure that the data packets are delivered properly.

• Firewall

A firewall is a **device** that sits between your computer and the Internet that prevents unauthorized access to or from your network. A firewall can be a computer using firewall software or a special piece of hardware built specifically to act as a firewall. In most circumstances, a firewall is used to prevent unauthorized Internet users from accessing private networks or corporate **LAN's and Internet**.

A firewall watches all of the information moving to and from your network and analyzes **each piece of data**. Each piece of data is checked against a set of criteria that the administrator configures. If any data does not meet the criteria, that data is blocked and discarded. If the data meets the criteria, the data is passed through. This method is called packet filtering.

A firewall can also run specific security functions based on the type of application or type of port that is being used. For example, a firewall can be configured to work with an **FTP or Telnet** server. Or a firewall can be configured to work with specific **UDP or TCP** ports to allow **certain applications or games to work properly over the Internet**.

- **VPN – Virtual Private Network**

Virtual Private Networking (VPN) uses a publicly wired network (**the Internet**) to securely connect two different networks as if they were the same network. For example, an employee can access the corporate network from home using **VPN**, allowing the employee to access files and printers. Here are several different implementations of **VPN** that can be used.

- **PPTP – Point-to-Point Tunneling Protocol**

PPTP uses proprietary means of connecting two private networks over the Internet. **PPTP** is a way of securing the information that is communicated between networks. **PPTP** secures information by encrypting the data inside of a packet.

- **IPSec – IP Security**

IPSec provides a more secure network-to-network connection across the Internet or a **Wide Area Network (WAN)**. **IPSec** encrypts all communication between the client and server whereas **PPTP** only encrypts the data packets. Both of these **VPN** implementations are used because there is not a standard for **VPN** server software. Because of this, each **ISP** or business can implement its own **VPN** network making interoperability a challenge.

- **DHCP – Dynamic Host Configuration Protocol**

DHCP is a protocol for dynamically assigning IP addresses to networked computers. With **DHCP**, a computer can automatically be given a unique IP address each time it connects to a **network-making IP address** management an easier task for network administrators. When a computer logs on to the network, the **DHCP** server selects an **IP address** from a master list and assigns it to the system.

- **NAT – Network Address Translation**

For a computer to communicate with other computers on the Internet, it must have an **IP address**. An **IP (Internet Protocol)** address is a unique **32-bit number** that identifies the location of your computer on a network. However, with the explosion of the Internet, the number of available **IP addresses** are simply not enough.

This is where NAT comes to the rescue. Network Address Translation allows a single device, such as a router, to act as an agent between the Internet (or "**public network**") and a local (or "**private**") network. This means that only a single, unique **IP address** is required to represent an entire group of computers.

- **Printer Server**

Printer Server allow networked **PC** sharing the same printer on the network, only the networked PC has printer driver without physical connection directly with printer.

- **DDNS – Dynamic Domain Name System Server**

Domain Name System Server is a server that matches **URLs (such as www.router-net.com)** to numeric IP addresses. **DDNS**

- **TCP/IP**

Transmission Control Protocol (TCP) with **Internet Protocol (IP)**. The main internetworking protocol used in the Internet.

- **PPPoE – PPP (Point-to-Point Protocol) over Ethernet**

PPP is the standard Internet protocol for dial-up connections. **PPPoE** is for connecting remote hosts to the Internet over an always-on connection by simulating a dial-up connection.

- **UDP – User Datagram Protocol**

UDP provides a procedure for application programs to send messages to other programs with a minimum of protocol mechanism. The protocol is transaction oriented, and **delivery and duplicate** protection is not guaranteed. Applications requiring ordered reliable delivery of streams of data should use the **TCP**.

- **DMZ Host– De-Militarized Zone Host**

DMZ is the portion of a private network that is visible through the network's firewalls. DMZ Host allows a local computer exposed to the Internet. Therefore, an incoming packet will be checked by **Firewall and NAT** algorithms in the router, then pass to the **DMZ** host when packet is not sent by hacker and is not limited by Virtual Server list. Besides, there are some IP protocols that does not have port number information. There is no way to use Virtual Server setting to forward incoming packet. Thus, **DMZ** host is the way to forward such kind of packets. If you try to enable **DMZ** host and setup Virtual Server, the precedence is Virtual Server and then **DMZ**.

For example, the incoming packet will be checked with Firewall rules, Virtual Server rules and then **DMZ** host.

2. Hardware Installation

2.1 Product Description

This Router with two type of housing, plastic and metal, is easy to install. With its Diagnostic **LEDs**, you could easily do trouble-shooting and get status information.

2.1.1 Front Panel



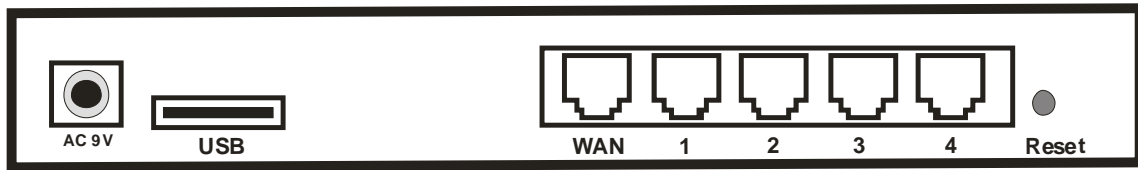
2.1.2 LEDs

The LEDs are explained in the following tables.

LED	LED Activity
Power	Lights to indicate the router has power.
Link/Act. for 1~4 LAN Port and WAN Port	<ol style="list-style-type: none">1. Lights to indicate a functional network link through the corresponding port (1 through 4 and WAN) with an attached device.2. Blinks to indicate that the router is actively sending or receiving data over that port.
Link/Act. for USB Printer Port	<ol style="list-style-type: none">1. Lights to indicate a functional USB Printer Port link through the correspond2. Blinks to indicate that the printer is actively sending or receiving data over that port.

2.1.3 Rear Panel

The following graphic shows the rear panel.



- **AC 9V** : To connect the adapter to receive power.
- **USB**: This is USB Printer Port to connect your USB printer via USB cable. Please note that “**DO NOT**” connect any other USB devices except USB printer or the “**Self-Power USB Hub**” to the USB port.
- **WAN**: To connect the Cabel/DSL modem via **Cat.5 RJ-45 cable**.
- **LAN 1~4**: To connect networked **PC or uplink to Switch or Hub**.
- **Reset**: Pressing the Reset button for more than **3 seconds**, the router will restore to factory default setting. Please note that this should be done only when you had tried all the troubleshooting options. Pressing the Reset button during operation may bring you into the risk of creating **IP address** conflict between your **PC** and the router. In such a case, you may be compelled to reboot your entire system.

2.2 Getting Started

Please refer to the following sections of this manual for additional information about **setting up** a network.

2.2.1 System Requirement

Before you getting started, make sure that you meet the following requirements.

1. An Internet connection through a cable or DSL modem
2. A computer with an Ethernet network card installed
3. Your **Windows CD**, if your computer is running **Windows 95, 98, or ME**
4. UTP network cable with **RJ-45** connector
5. Either Microsoft Internet Explorer **4.0 (or above version)** or Netscape Navigator **4.0 (or above version)**

2.2.2 Before Installation

Before you start to connect your router to any network device, make sure you get the following values from your **ISP**. You will need those values to setup the Router and configure you networked **PCs** to accept the IP address the Router chooses to assign them.

- **PPPoE** User Name and Password or Fixed Internet IP Address assigned by your local **ISP**

-
- Your Subnet Mask
 - Your Default Gateway
 - Your Primary **DNS IP address**

You are supposed to have all those information mentioned above from your **ISP**. If not, contact your **ISP** and they will be able to supply all the information you need.

2.2.3 Setting Hardware Connection

Follow the steps listed below to install your Router when you have all the information mentioned above on hand.

Step 1. Power all devices down.

This should include your PCs, Cable or DSL modem and the Router.

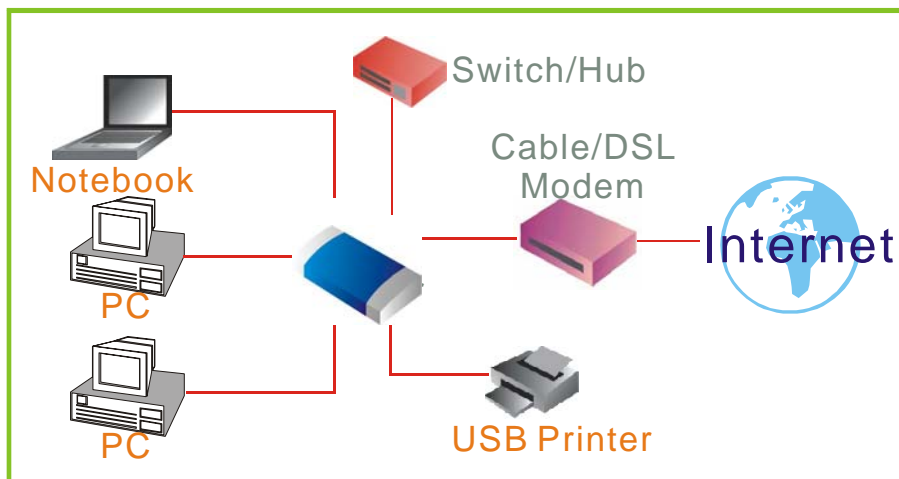
Step 2. Connect the Router to your PCs.

Connecting Computers: Connect computers directly to the Router on **ports 1~4** on the rear panel. If you have more than **4 computers** need to be connected, connect a hub or a switch (**using its uplink port**) and connect additional computers to that device.

Step 3. Connecting a **Cable Modem or DSL Modem**: Connect your **Cable or DSL modem** to the WAN port on the rear panel.

Step 4. Connecting a Printer: If you have a printer that you want to share between computers, connect it to the Printer port using a standard **USB Cable**.

Step. 5 Power: Plug the power cord into the power jack. And power on computers.



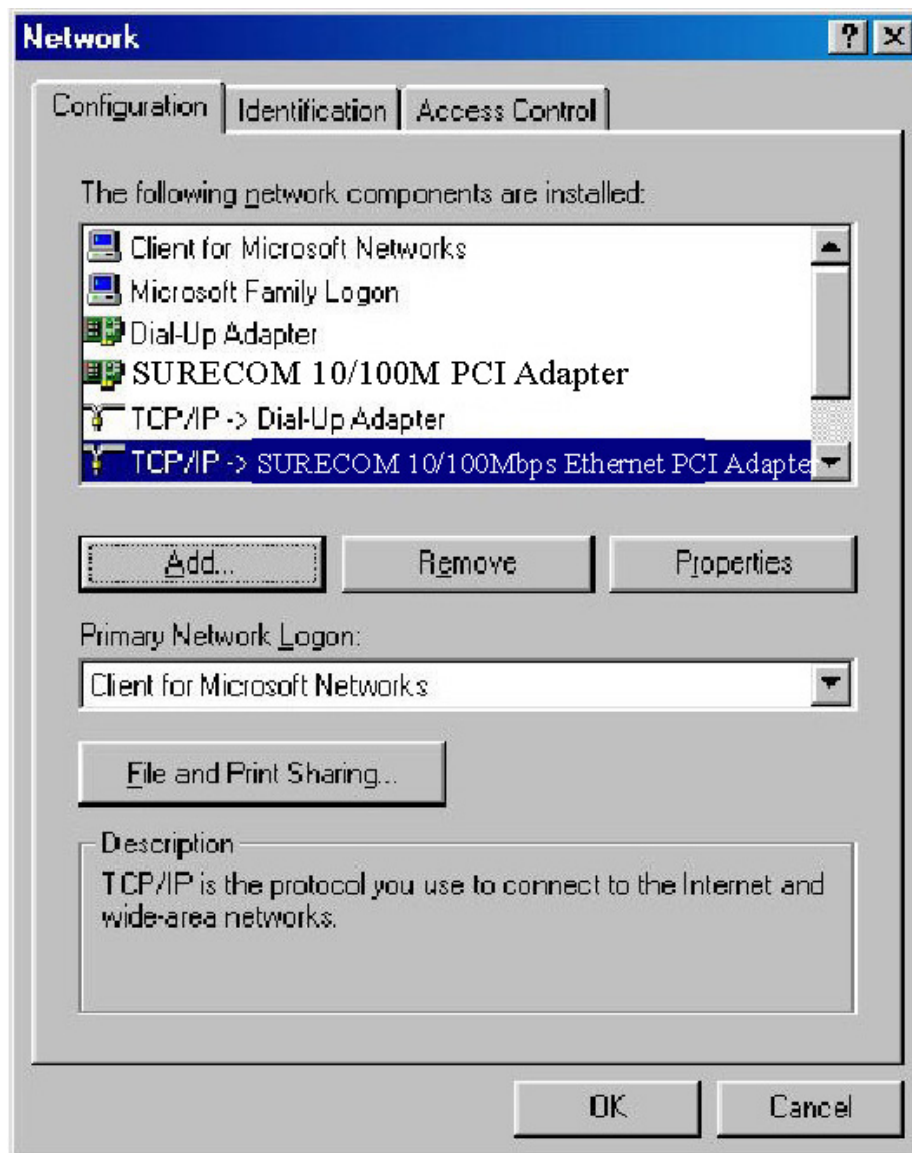
2.2.4 Configure your computer

• Windows 95/98/ME

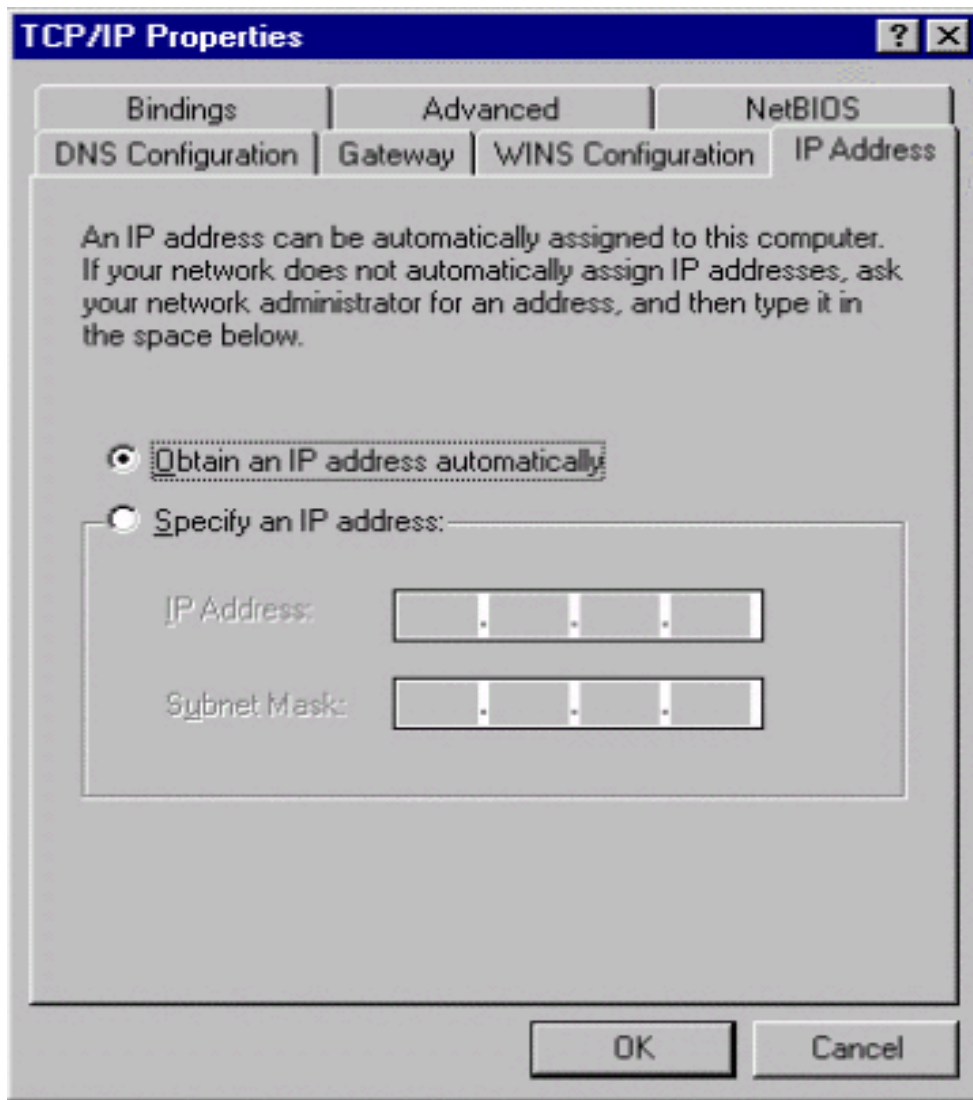
Step 1. TCP/IP Configuration

After you have completed the hardware setup by connecting your devices, you need to configure your computer to connect to your Router.

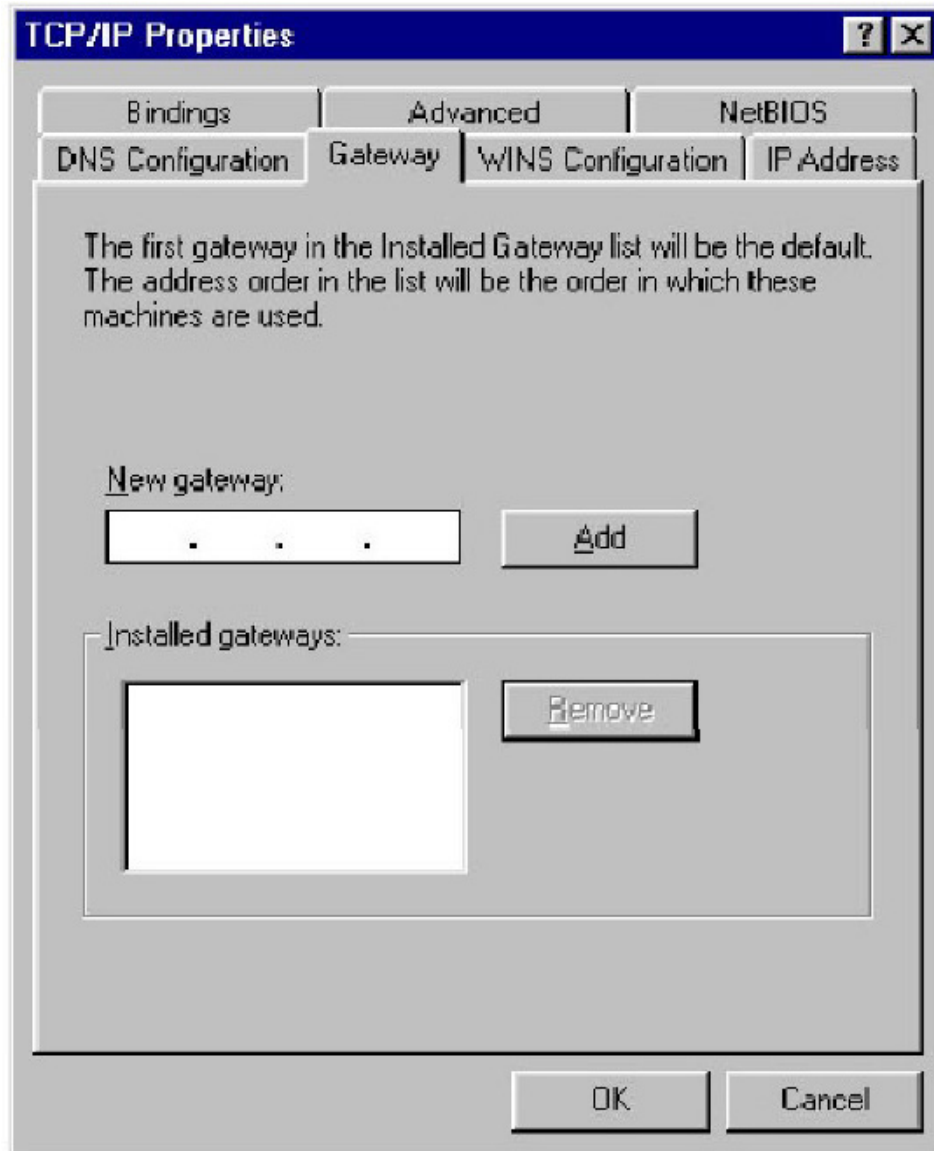
1. From the Windows desktop, click the “**Start**” button and choose “**Settings**”, then click “**Control Panel.**”
2. From “**Control Panel**”, double-click the “**Network**” icon.
3. In the “**Network**” window, under the “**Configuration**” tab, double-click the “**TCP/IP**” entry that is listed with your network card.



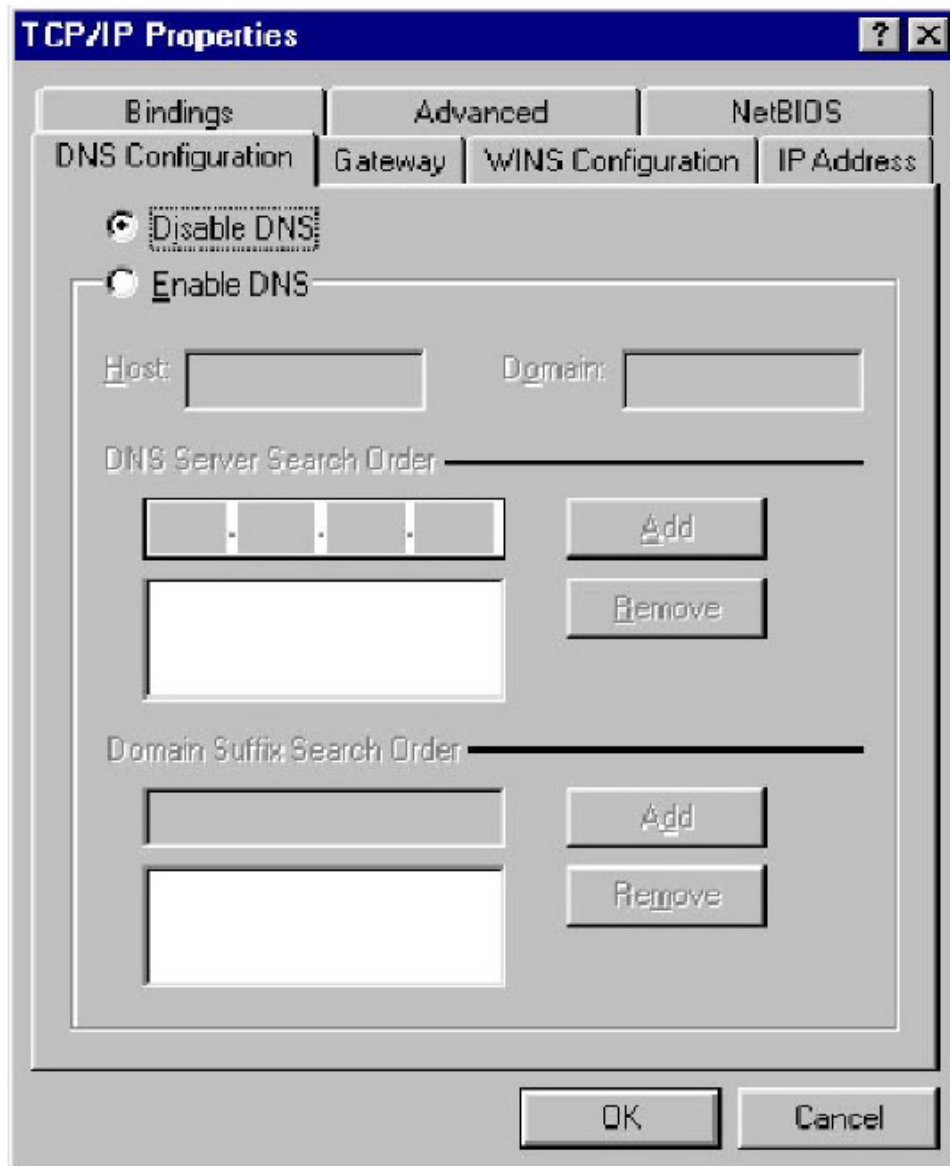
4. On the “Internet Protocol (TCP/IP) Properties” dialog box, make sure “Obtain an IP address automatically” and “Obtain DNS server address automatically” are selected. If not, select them and click “OK” and close window.



-
5. Locate your IP address and Subnet Mask. Type them in the spaces provided below.
 6. Click the “Gateway” tab and record the numbers listed under



7. Click the “DNS Configuration” tab. Locate the DNS servers listed under “DNS Server Search Order”. And Click “OK”

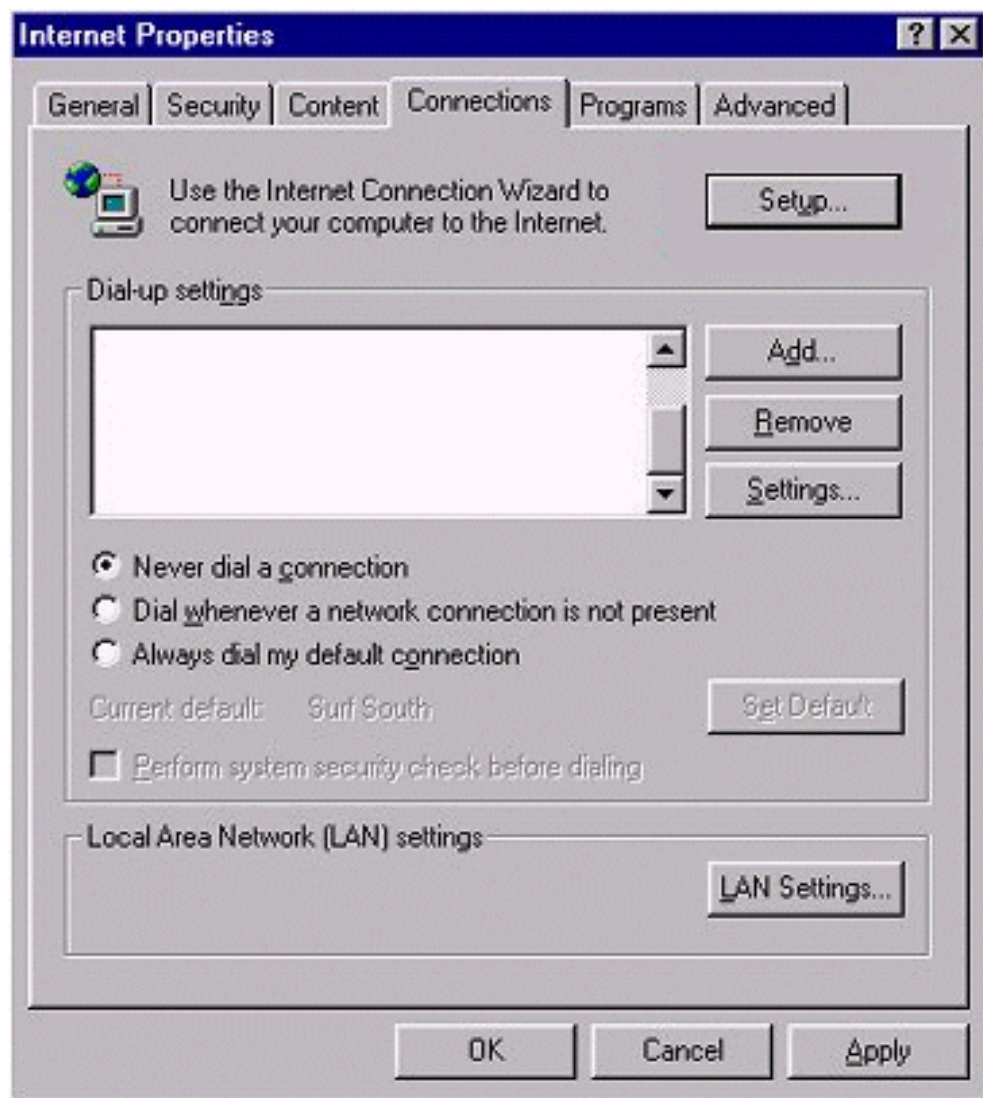


8. System may need your **Windows 95/98/ME** CD to copy some files. After it finishes copying, please restart your system.

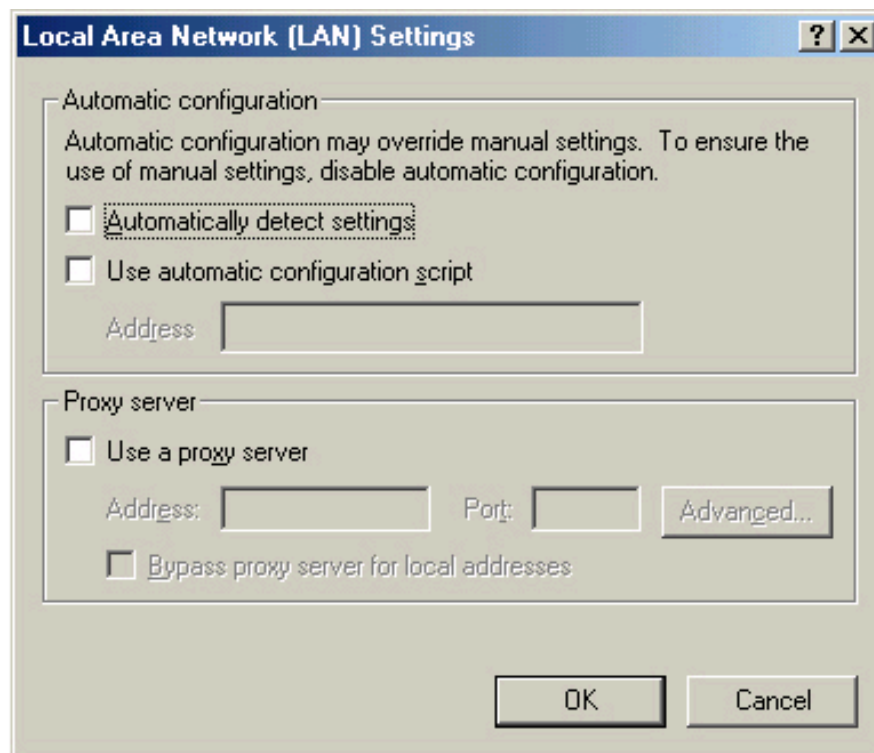
Step. 2 Disable HTTP Proxy

• Internet Explorer

1. Open Internet Explorer and click the stop button. Click “**Tools**” then “**Internet Options**”
2. In the “**Internet Options**” window click the “**Connections**” tab. Then click the “**LAN Settings**” button.



3. Clear all the checkboxes.



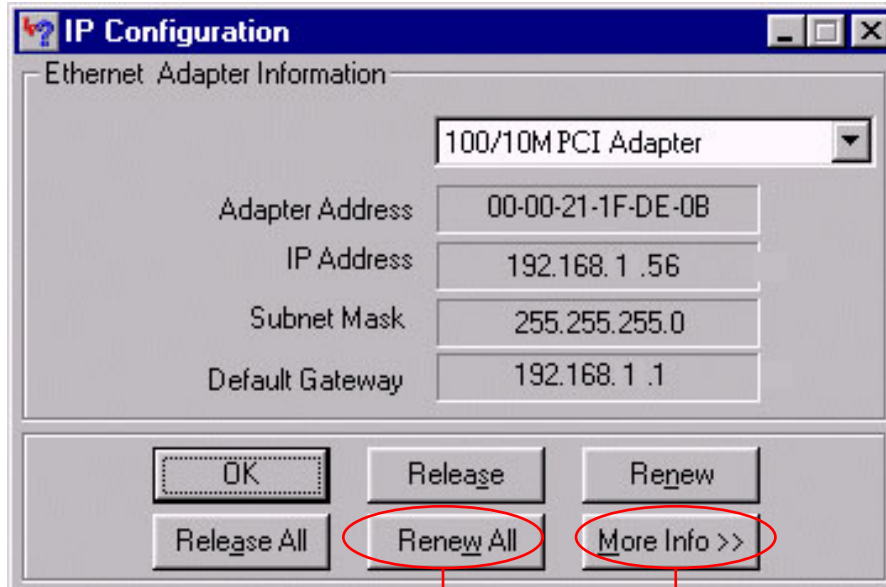
4. Click “OK,” and then click “OK” again to close the “Internet Options” window.

• Netscape

1. Open Netscape and click the stop button. Click “Edit,” then click “Preferences...”
2. In the “Preferences” window, under “Category” double-click “Advanced,” then click “Proxies.” Select “Direct connection to the Internet.” Click “OK.”

Step. 3 Obtain IP Settings from Your Router

1. Click “Start,” then “Run...” Type “winipcfg” to open the IP Configuration utility.



2. Click the “Release All” button.

3. Click the “Renew All” button

4. Verify that your IP address is now **192.168.1.xxx**, your Subnet Mask is **255.255.255.0** and your Default Gateway is **192.168. 1.1**. Click “OK” to close the “IP Configuration” window.

• Windows NT/2000/XP

Step 1. TCP/IP Configuration

After you have completed the hardware setup by connecting your devices, you need to configure your computer to connect to your Router.

1. From the Windows desktop, click the “Start” button. Choose “Settings”, then click “Control Panel.”

2. From “Control Panel”, double-click the “Network & Dial-Up Connections” icon.

3. **Double-click** the icon that corresponds to the connection to your router.

4. Click “Properties” and double-click “Internet Protocol (TCP/IP).”

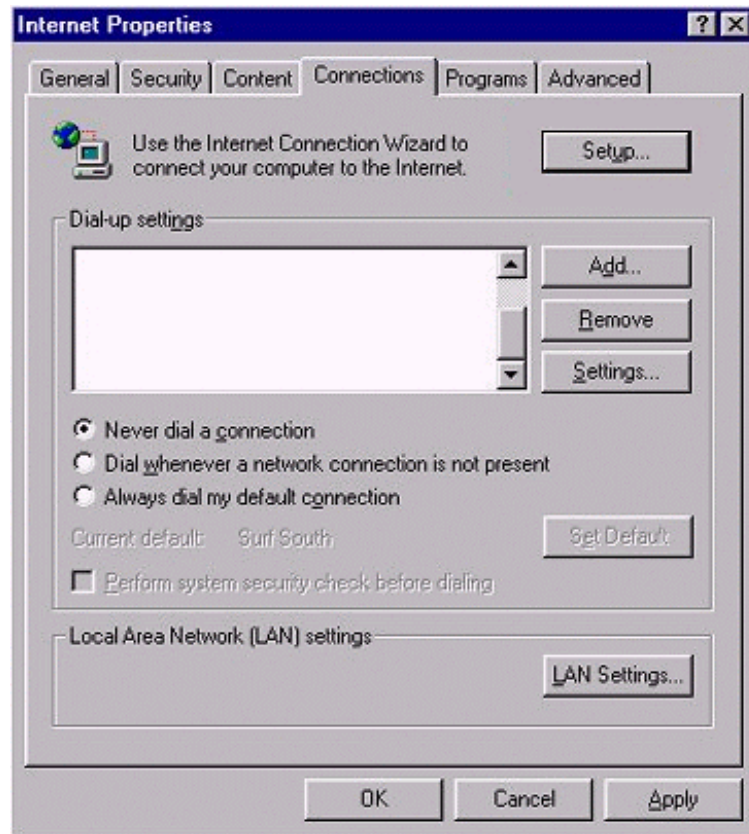
5. On the “Internet Protocol (TCP/IP) Properties” dialog box, make sure “Obtain an IP address automatically” and “Obtain DNS server address automatically” are selected.

If not, select them and click “OK” and close window.

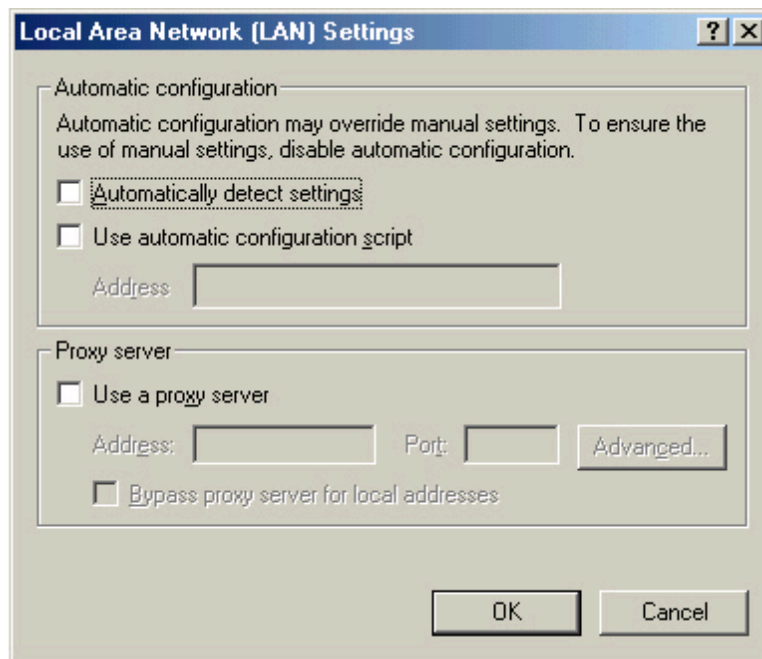
Step. 2 Disable HTTP Proxy

• Internet Explorer

1. Open Internet Explorer and click the stop button. Click **“Tools”** then **“Internet Options”**
2. In the **“Internet Options”** window click the **“Connections”** tab. Then click the **“LAN Settings”** button.



3. Clear all the check boxes.



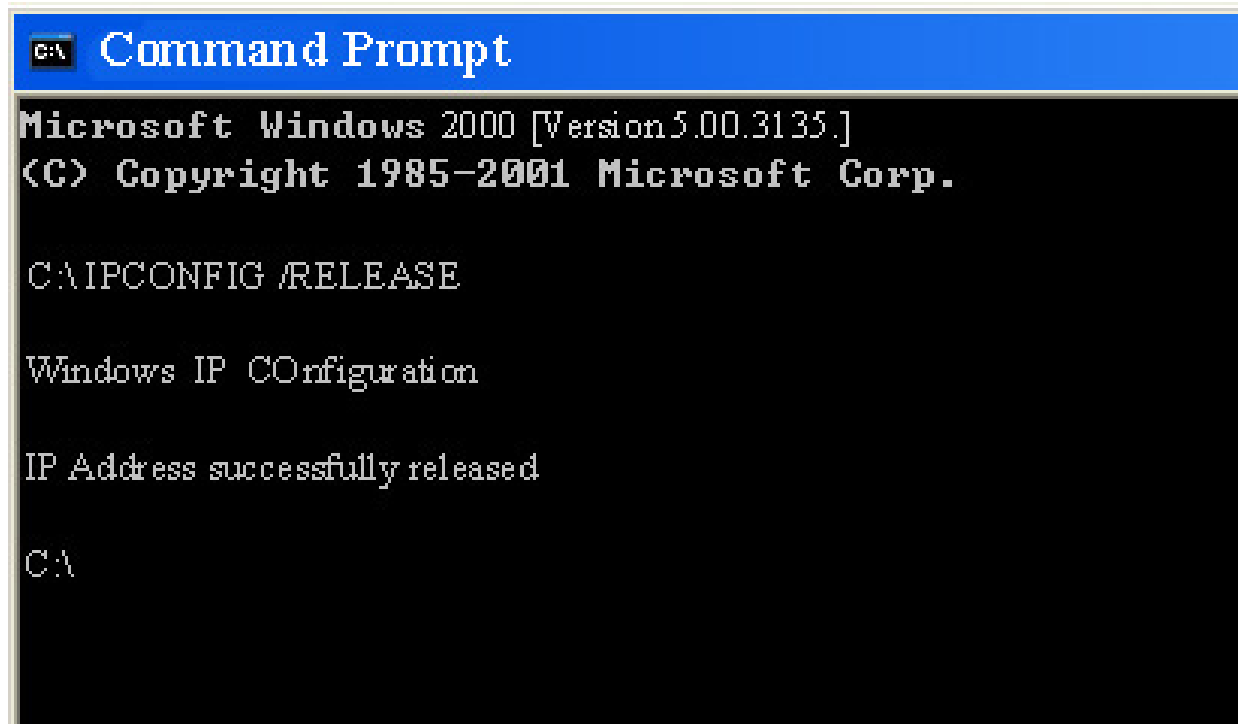
4. Click “OK,” and then click “OK” again to close the “Internet Options” window.

• Netscape

1. Open Netscape and click the stop button. Click “Edit,” then click “Preferences...”
2. In the “Preferences” window, under “Category” double-click “Advanced,” then click “Proxies.” Select “Direct connection to the Internet.” Click “OK.”

Step. 3 Obtain IP Settings from Your Router

1. From the Windows desktop, click the “Start” button, then “Programs“, then “Accessories” and then click “Command Prompt.”
2. Type “IPCONFIG /RELEASE” and press “Enter”.



```
C:\> Command Prompt
Microsoft Windows 2000 [Version 5.00.3135.]
(C) Copyright 1985-2001 Microsoft Corp.

C:\> IPCONFIG /RELEASE

Windows IP Configuration

IP Address successfully released

C:\>
```

3. Type **“IPCONFIG /RENEW”** and press **“Enter”**.

```
Command Prompt
Microsoft Windows [Version 5.00.2195]
(C) Copyright 1985-1999 Microsoft Corp.

C:\>IPCONFIG /RELEASE

Windows 2000 IP Configuration

IP address successfully released for adapter "Local Area Connection 1"

C:\>IPCONFIG /RENEW

Windows 2000 IP Configuration

Ethernet adapter Local Area Connection 1:

    Connection-specific DNS Suffix . :
    IP Address . . . . . : 192.168.1.125
    Subnet Mask . . . . . : 255.255.255.0
    Default Gateway . . . . . : 192.168.1.1

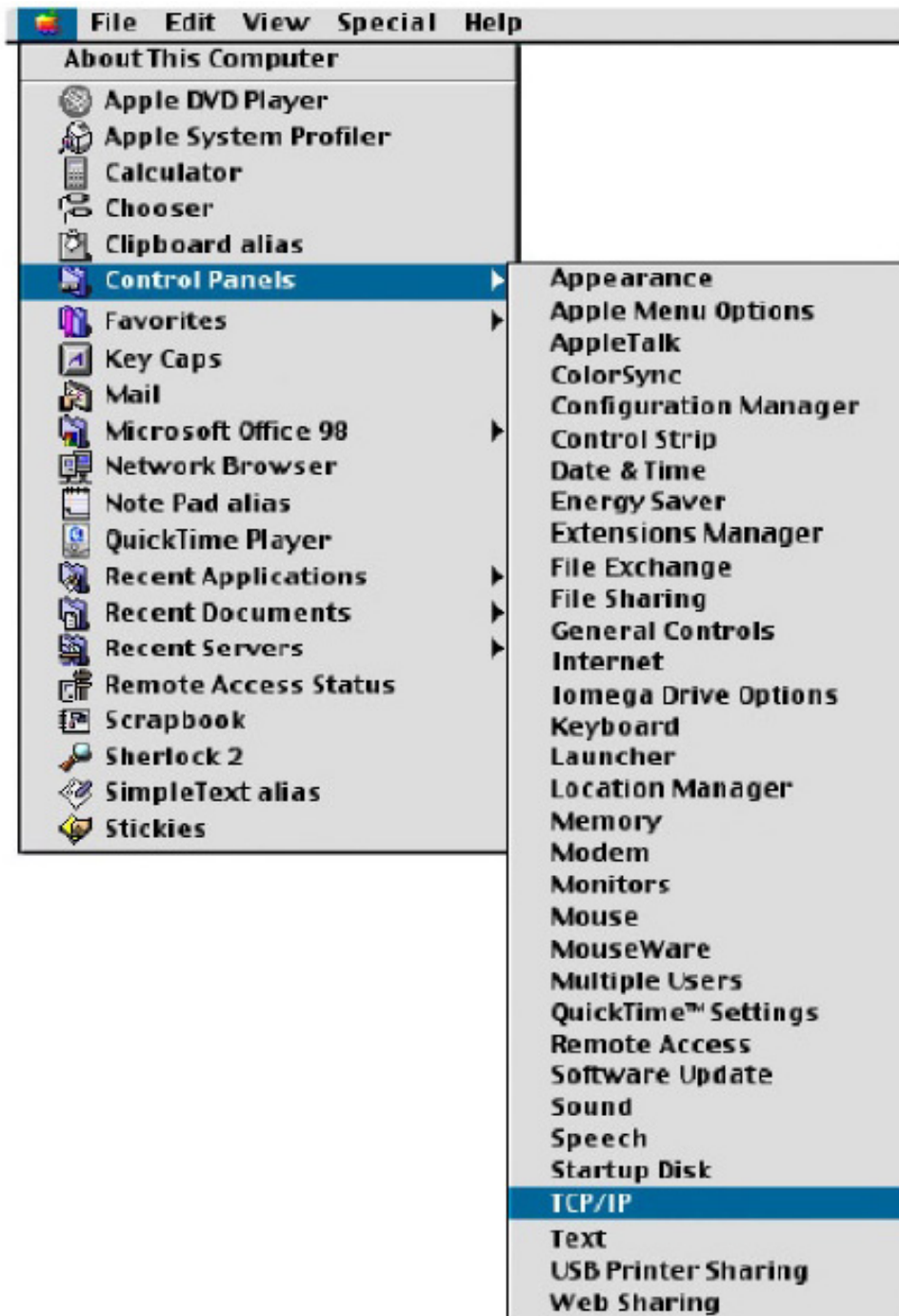
C:\>
```

4. Verify that your IP address is now **192.168.1.xxx**, your Subnet Mask is **255.255.255.0** and your Default Gateway is **192.168. 1.1**. Click **“OK”** to close the **“IP Configuration”** window.
5. Type **“Exit”** and close window.

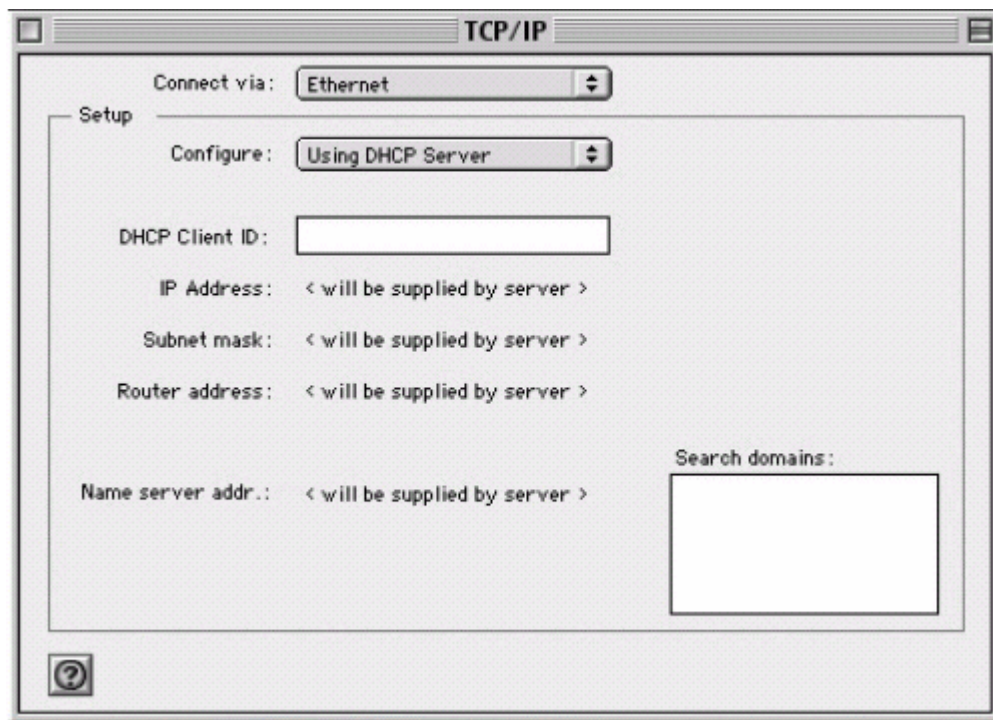
• **MAC OS 7.X or above**

Step 1. TCP/IP Configuration

1. Pull down the Apple Menu. Click “**Control Panels**” and select TCP/IP.



2. In the **TCP/IP** dialog box, make sure that **“Ethernet”** is selected in the **“Connect Via:”**field. Make sure **“Using DHCP Server”** is already selected in the **“Configure”**field and close window.

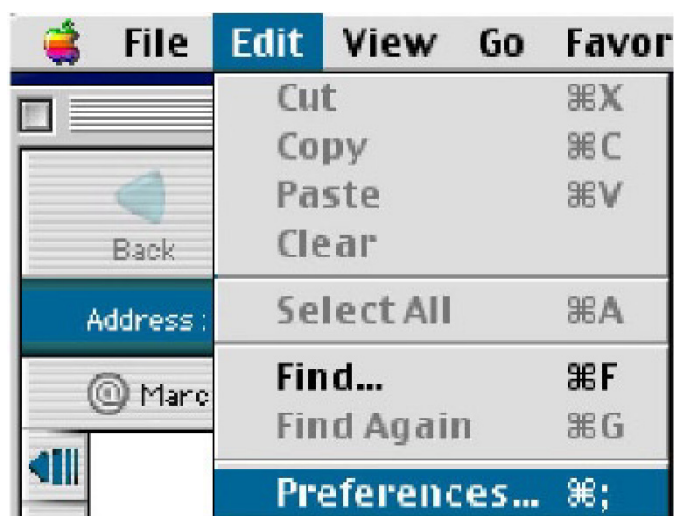


3. Another box will appear asking whether you want to save your **TCP/IP** settings. Click **Save**.

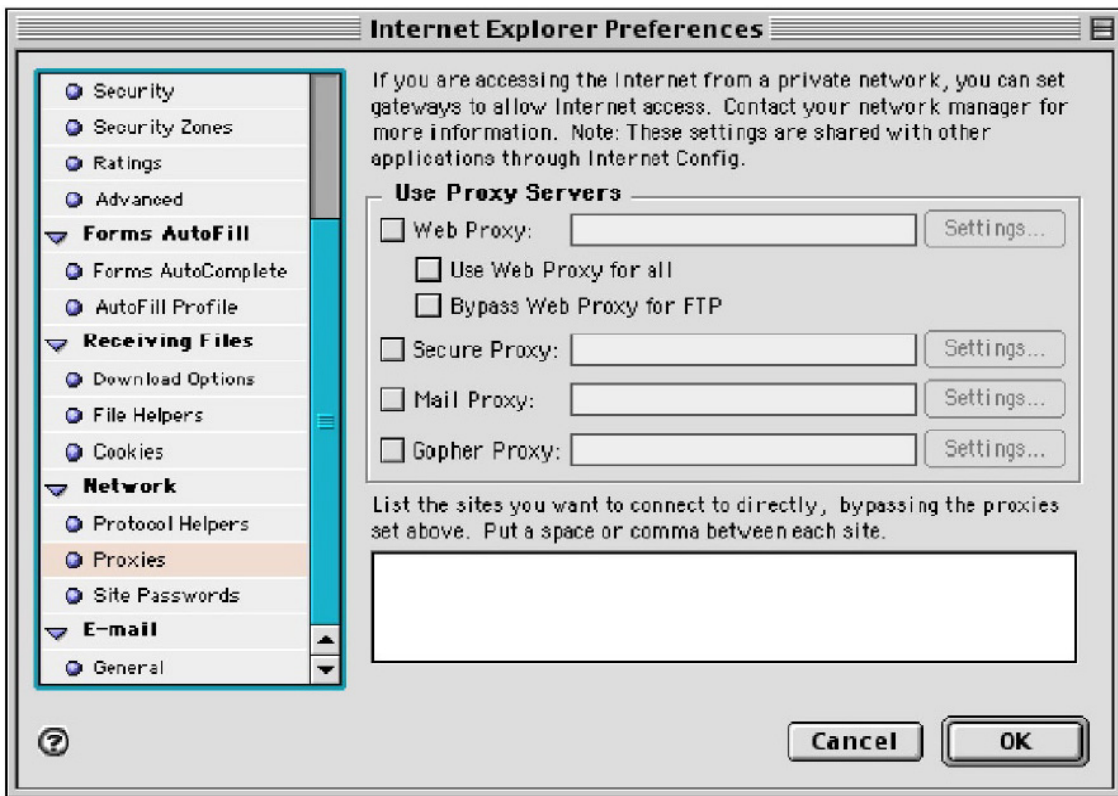
Step. 2 Disable HTTP Proxy

• Internet Explorer

1. Open Internet Explorer and click the stop button. Click **“Edit”** then **“Preferences”**



2. Select **“Proxies”** and uncheck all checkboxes and click **“OK”**.

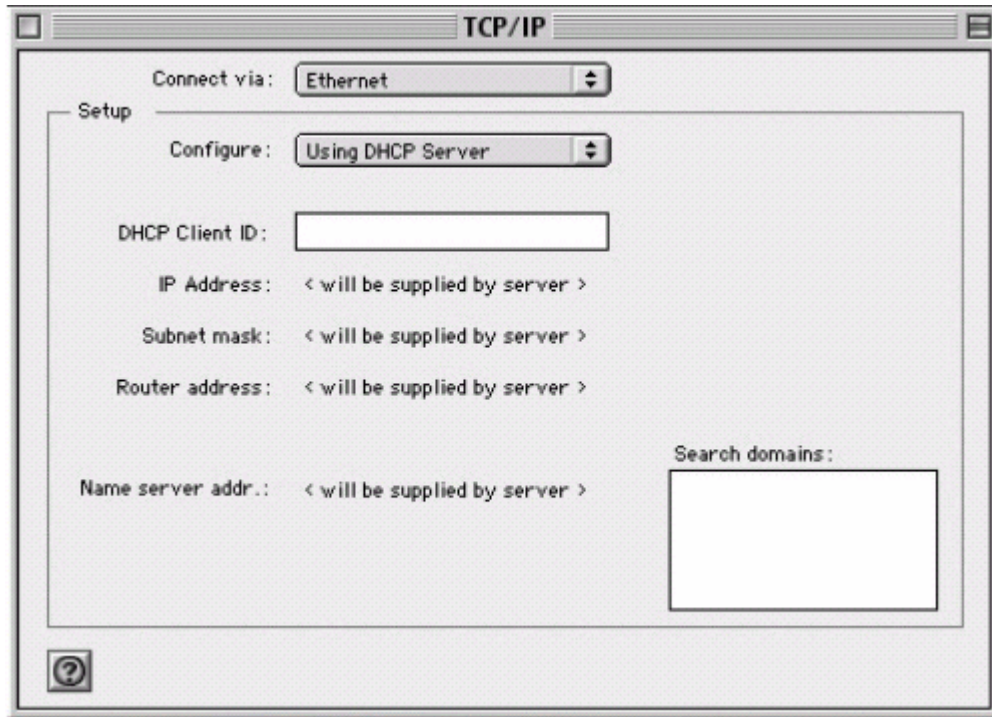


• **Netscape**

1. Open Netscape and click the stop button. Click **“Edit,”** then click **“Preferences...”**
2. In the **“Preferences”** window, under **“Category”** double-click **“Advanced,”** then click **“Proxies.”** Select **“Direct connection to the Internet.”** Click **“OK.”**

Step. 3 Obtain IP Settings from Your Router

1. Pull down the Apple Menu. Click “Control Panels” and select TCP/IP.
2. In the TCP/IP window, your new settings will be shown. Verify that your IP address is now **192.168.1.xxx**, Subnet Mask is **255.255.255.0** and Default Gateway is **192.168.1.1**. Close Window.



3. Using Configuration Menu

After configuration of your network, you can access the Router via Web browser and type the **IP Address** of Router. The default IP address of this Router is shown as following.



Please note that if you have changed the default IP Address assigned to the Router, make sure to enter the correct **IP Address**.

Then the **“Password”** dialogue will be shown up. **The default “User Name” is admin. The default “Password” is “admin”**. Please refer to **“Device Admin”** page to check how to change your password.



3.1 Basic Setup

After enter user name and password, the configuration utility will show up. The first page is “Basic Setup”. You can set up your connection type to your ISP. When finishing setting, click “Apply” button to save. If you skip pressing “Apply” button, the system will reset automatically.

Note: After applying these settings, sometimes connection information is stored on the modem and needs to be updated. You may need to shut down and restart your modem.

Basic Setup-Static IP

Basic Setup
DHCP Settings
URL Access
IP Access
Virtual Server
DMZ Host
Device Admin
Status Monitor
RIP
Static Routing
Dynamic DNS
Special Application
Statistics
Security Settings
UPnP

Host Name: (Required by some ISPs)
Domain Name: (Required by some ISPs)
Private IP Address (MAC Address: 00-00-21-2d-d7-c0)
Private IP Address: 192 168 1 1
Subnet Mask: 255 255 255 0
Public IP Address (MAC Address: 00-00-21-2d-d7-c1)
 Get an IP Address Automatically(DHCP)
 Get an IP Address Automatically(PPPoE)
 Static IP Address
Static IP Address: 192 168 7 1
Public Subnet Mask: 255 255 255 0
Default Gateway IP Address: 192 168 7 254
Domain Name Server 1: 0 0 0 0
Domain Name Server 2: 0 0 0 0
Domain Name Server 3: 0 0 0 0
 PPTP Client

Apply Undo

1. Host Name & Domain Name

Some ISPs required these names as identification. You may check with your ISP to see if your Broadband Internet Service has been configured with a host and domain name (like **CX-1234-56789**). In most cases, leaving fields blank will work.

2. Private IP Address

IP Address of this router used by the internal LAN. The default value is **192.168.1.1** for IP Address and **255.255.255.0** for Subnet Mask. In most applications, you should not change the “IP address” from the default (**192.168.1.1**). However, if you are implementing your router into an existing network, you may need to change it to match your current addressing scheme.

3. Public IP Address

The Public IP Address and Subnet Mask of this router are used by external users of the Internet (including your ISP). Choose one of connection type, “**DHCP**” or “**PPPoE**” or “**Static IP Address**” or “**PPTP**”.

Select “**DHCP**” or “**PPPoE**” if these values are to be automatically assigned to the router by your ISP.

If a fixed Public IP Address is to be used, select “**Static IP Address**” and enter the IP Address and Public Subnet Mask provided by your ISP. “**PPTP**” mostly used in Europe. Choose this type of connection, if you connect to your ISP by PPTP.

After choosing connection type, the corresponding option will show up for more detail setting.

• **DHCP**

If your **IP Address** is provided by your **ISP dynamically**, choose this option.

Pre-request IP: Enter the IP address if your ISP need it.

MTU: Enter the MTU value you want to set. We recommend to keep the default value.

Basic Setup-DHCP

Host Name:	<input type="text"/>	(Required by some ISPs)
Domain Name:	<input type="text"/>	(Required by some ISPs)
Private IP Address	(MAC Address: 00-02-44-8a-2f-a8)	
Private IP Address:	<input type="text" value="192"/> . <input type="text" value="168"/> . <input type="text" value="1"/> . <input type="text" value="1"/>	
Subnet Mask:	<input type="text" value="255"/> . <input type="text" value="255"/> . <input type="text" value="255"/> . <input type="text" value="0"/>	
Public IP Address	(MAC Address: 00-02-44-8a-2f-b2)	
DNS Proxy :	<input checked="" type="radio"/> Enable <input type="radio"/> Disable	
	<input checked="" type="radio"/> Get an IP address automatically (DHCP)	
Pre-Request IP	<input type="text" value="0"/> . <input type="text" value="0"/> . <input type="text" value="0"/> . <input type="text" value="0"/>	
MTU:	<input type="text" value="1500"/> (Max=1500) Change	
	<input type="radio"/> Get an IP address automatically (PPPoE)	
	<input type="radio"/> Static IP Address	
	<input type="radio"/> PPTP Client	

• **PPPoE**

User Name: Your User Name provided by your **ISP**.

Password: Your password provided by your **ISP**.

ISP Name: Your ISP name.

Connect on Demand: When you enable this function, then the router will connect to your **ISP** under your command.

Disconnect when network idle: You can set the network idle time to disconnect. If you set the time “0”, this function will be disabled.

Basic Setup-PPPoE

Host Name: (Required by some ISPs)

Domain Name: (Required by some ISPs)

Private IP Address (MAC Address: 00-02-44-8a-2f-a8)

Private IP Address: . . .

Subnet Mask: . . .

Public IP Address (MAC Address: 00-02-44-8a-2f-b2)

DNS Proxy : Enable Disable

Get an IP address automatically (DHCP)

Get an IP address automatically (PPPoE)

User Name:

Password:

ISP Name:

MTU: (Max=1492) [Change](#)

Connect-on-demand: Enable Disable

Disconnect when network idle min (0=No Idle Time Setting, Min=5 min)

Static IP Address

PPTP Client

[Apply](#) [Undo](#)

• **Static IP Address**

Static IP Address: Enter the IP Address provided by your **ISP**.

Public Subnet Mask: Enter the Subnet Mask provided by your **ISP**.

Default Gateway IP Address: Enter the Gateway IP Address provided by your **ISP**.

Domain Name Server 1: Enter the Domain Name server Address provided by your **ISP**.

Basic Setup-Static

Host Name: (Required by some ISPs)

Domain Name: (Required by some ISPs)

Private IP Address (MAC Address: 00-02-44-8a-2f-a8)

Private IP Address:	192	168	1	1
Subnet Mask:	255	255	255	0

Public IP Address (MAC Address: 00-02-44-8a-2f-b2)

DNS Proxy : Enable Disable

Get an IP Address Automatically (DHCP)

Get an IP Address Automatically (PPPoE)

Static IP Address

Static IP Address:	192	168	7	1
Public Subnet Mask:	255	255	255	0
Default Gateway IP Address:	192	168	7	254
Domain Name Server 1:	0	0	0	0
Domain Name Server 2:	0	0	0	0
Domain Name Server 3:	0	0	0	0

PPTP Client

• **PPTP**

IP Address: Enter the IP Address provided by your **ISP**.

Subnet Mask: Enter the Subnet Mask provided by your **ISP**.

Default Gateway: Enter the Gateway **IP Address** provided by your **ISP**.

User ID: Enter the **User ID** provided by your **ISP**.

Password: Enter the Password provided by your **ISP**.

PPTP Server: Enter the **PPTP** Server Address provided by your **ISP**.

MTU: If you need to change the MTU value, enter the value you want to set and click “change”. We recommend to use default value unless your ISP require you to change.

Idle Time Out: Enter a maximum idle time during which Internet connection is maintained during inactivity. To disable this feature, enter “0”.

Basic Setup-PPTP

Host Name: (Required by some ISPs)

Domain Name: (Required by some ISPs)

Private IP Address (MAC Address: 00-02-44-8a-2f-a8)

Private IP Address:

Subnet Mask:

Public IP Address (MAC Address: 00-02-44-8a-2f-b2)

DNS Proxy: Enable Disable

Get an IP address automatically (DHCP)

Get an IP address automatically (PPPoE)

Static IP Address

PPTP Client

IP Address:

Subnet Mask:

Default Gateway:

User ID:

Password:

PPTP Server:

MTU: (Max=1460)

Idle Time Out:

3.2 DHCP

Unless you already have a **DHCP** server on your internal network, choose “**Enable**” from the **DHCP**. A **DHCP** Server can automatically assign IP Address to each computer in your network.

It is highly recommended that you set your broadband router to act as a **DHCP** server. Be sure to set your computers to be **DHCP** clients by setting their **TCP/IP** settings to “**Obtain an IP Address Automatically.**” When you turn your computers on, they will automatically load the proper **TCP/IP** settings provided by the router. The **DHCP** Server will automatically allocate an unused **IP address from the IP address pool** to the requesting computer. You must specify the starting and ending address of the IP address pool.

DHCP

DHCP Server: Enable Disable

Start IP Address: [192] [168] [1] [2]

End IP Address: [192] [168] [1] [51]

Static DHCP: Enable Disable

[192]	[168]	[1]	[0]	<===>	[00]	[00]	[00]	[00]	[00]	[00]
[192]	[168]	[1]	[0]	<===>	[00]	[00]	[00]	[00]	[00]	[00]
[192]	[168]	[1]	[0]	<===>	[00]	[00]	[00]	[00]	[00]	[00]
[192]	[168]	[1]	[0]	<===>	[00]	[00]	[00]	[00]	[00]	[00]
[192]	[168]	[1]	[0]	<===>	[00]	[00]	[00]	[00]	[00]	[00]

DHCP Client Table

- **DHCP Server:** Select “**Enable**” to use the **DHCP** server option of the broadband router.
If you already have a DHCP server in your network, set the router’s **DHCP** option to “**Disable**”.
- **Start IP Address/ End IP Address:** Enter the starting/ Ending IP address for the DHCP server’s IP assignment. Make sure the first three octets match the router’s IP address, i.e., **192.168.1.xxx**. The value must be located from **2 to 254**.
- **Static DHCP:** If you need to specify your LAN clients to static IP addresses, you can enable this function. And enter the LAN client’s IP address corresponding to its MAC address.

3.2.1 DHCP Client Table

This table will show you how many networked computers have been found on your **DHCP** server and the IP Address and MAC Address of networked computers connected to the Router. Click **“Reload”** to get updated information.

Current DHCP IP List

Gateway IP Address	192.168.7.254	
Host Name	IP Address	MAC Address

3.3 URL Access Setting

Use URL Access filters to allow or deny computers access to specific Internet domains whether it is through **www, ftp, snmp, etc.**

URL Access Settings

URL Access Limit: Enable Disable
Website Access: Allow Block
URL Address:

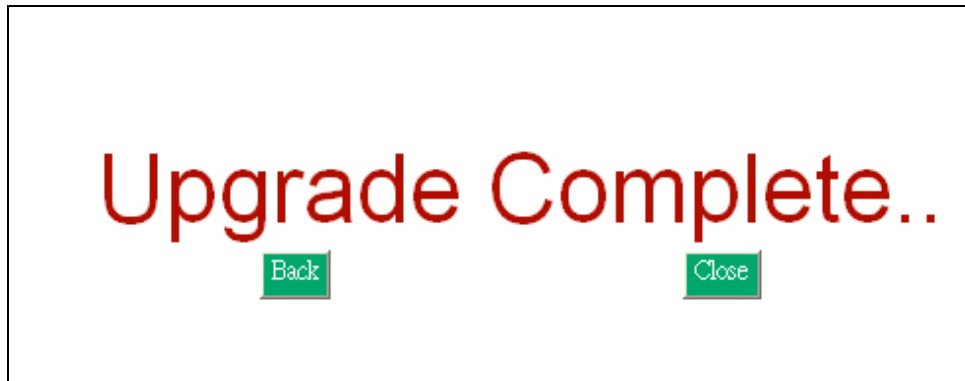
Current URL List

Site 1	<input type="text" value="Shopping.com"/>	<input type="button" value="Delete"/>
--------	---	---------------------------------------

URL Access Limit: Choose Enable/Disable to use URL Access filters or not.

• **Website Access:** Select “**Block**” to deny users to access the specified Internet websites listed below. Users will be allowed access to all other Internet websites. On the contrary, select “**Allow**” to allow users to access the specified Internet websites listed below. Users will be denied to access to all other Internet websites.

• **URL Address:** Enter the URL Addresses you want to use, i.e., shopping.com. Remember clicking “**ADD**” when finishing typing the URL Address. Wait for a few second, router will save the URL Address to URL List and click “**Back**”.



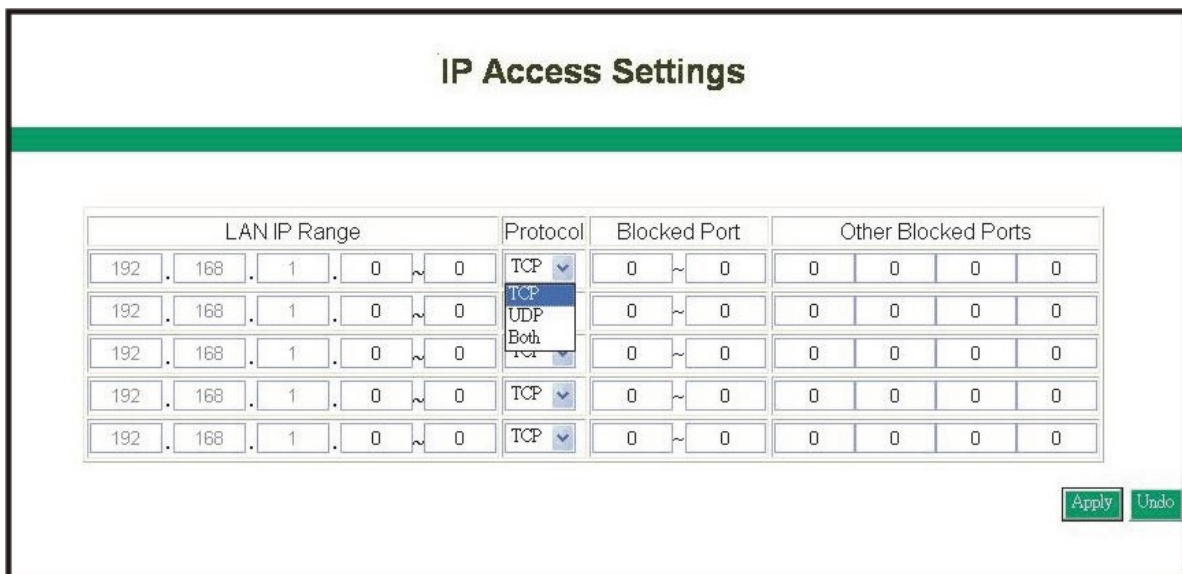
• **Current URL List:** This table show you the **URL** Addresses you use.

• **Remember clicking “Apply”** after making any changes.

3.4 IP Access

This function allows network administrators to restrict up to five groups of specified network users/computers from accessing the certain applications.

Before using this function, the network PCs that you want to control the access limitation should be assigned one fixed IP Address individually.



-
- **LAN IP Range:** Enter the range of IP addresses which you want them to be a controlled group to have the same access limitation.
 - **Protocol:** Select the protocol type as “**TCP**” or “**UDP**” from the pull down menu. If you are not sure which one to choose, select “**Both**”.
 - **Blocked Port:** Enter the range of port numbers which are used by the applications you wish to be blocked,i.e. Enter the range of **3~7** in the **LAN IP Range** column and **1~999** in the Blocked Port column and select the protocol type as **TCP**, then click “**Apply**” button. As the result, the user’s computers, which have IP Address in the range of **192.168.1.3 to 192.168.1.7**, will not to be able to use the applications that use port numbers from **1 to 999** and selected **TCP** protocol, such as web browsing. **Please check the 6th section to see more TCP/IP Port list for Internet Service.**

3.5 Virtual Server

The router can be configured as a virtual server so that remote users accessing **Web or FTP** services via the public **IP address** can be automatically redirected to local servers in the **LAN**.

The router firewall feature filters out unrecognized packets to protect your **LAN** network so all networked computers connected to the router are invisible to the outside world. If you wish, you can make some of the networked computers accessible from the Internet by enabling Virtual Server.

Depending on the requested service, the router will redirect the external service request to the appropriate server within the **LAN** network.

Virtual Server Settings

Select	Redirect IP Address				Port Range	Protocol
MSN_Messenger	192	168	1	4	1863 ~ 1863	TCP
Disable	192	168	1	0	0 ~ 0	TCP
Manual Setting	192	168	1	0	0 ~ 0	TCP
AUTH	192	168	1	0	0 ~ 0	TCP
DNS	192	168	1	0	0 ~ 0	TCP
FTP	192	168	1	0	0 ~ 0	TCP
POP3	192	168	1	0	0 ~ 0	TCP
SMTP	192	168	1	0	0 ~ 0	TCP
TELNET	192	168	1	0	0 ~ 0	TCP
WEB	192	168	1	0	0 ~ 0	TCP
Counter_Strike	192	168	1	0	0 ~ 0	TCP
Need_For_Speed_5	192	168	1	0	0 ~ 0	TCP
Manual Setting	192	168	1	0	0 ~ 0	TCP
Manual Setting	192	168	1	0	0 ~ 0	TCP
Manual Setting	192	168	1	0	0 ~ 0	TCP

- **Select:** Use the pull-down menu to select from a list of well-known Virtual Server services, such as Web, DNS, FTP, POP3 etc. The related Port Range will be automatically specified. For example, if you select the “FTP”, the port range will automatically be set to **21~21**. If you want to setting by yourself, you can select the “Manual Setting”.

Please check the 6th section to see more TCP/IP Port list for Internet Service.

Note: If the browser is Netscape Navigator 4.7, the “Protocol” column will be not automatically selected. When you select a specify application, you have to select the protocol by yourself.

- **Redirect IP Address:** The IP address of the networked computer connected to the router that will be using the virtual Server service.
- **Port Range:** Enter the desired service port numbers.
- **Protocol:** Specify the protocol type as “TCP” or “UDP” from the pull-down menu. If you are not sure which one to select, choose “Both”.

3.6 DMZ Host

If you have a computer that cannot run Internet applications properly from behind the router, then you can allow that computer to have unrestricted Internet access. Please note that adding a client to the **DMZ** may expose that computer to a variety of security risks, so only use this option as a last resort. Enter “0” in **LAN IP Address** field will disable **DMZ Host**.

PPPoE/DHCP Mode	
LAN IP	192 . 168 . 1 . 0
Fixed IP Mode	
MultiDMZ : <input type="radio"/> Enable <input checked="" type="radio"/> Disable	
WAN IP	LAN IP
0 . 0 . 0 . 0	192 . 168 . 1 . 0
0 . 0 . 0 . 0	192 . 168 . 1 . 0
0 . 0 . 0 . 0	192 . 168 . 1 . 0
0 . 0 . 0 . 0	192 . 168 . 1 . 0
0 . 0 . 0 . 0	192 . 168 . 1 . 0
0 . 0 . 0 . 0	192 . 168 . 1 . 0
0 . 0 . 0 . 0	192 . 168 . 1 . 0
0 . 0 . 0 . 0	192 . 168 . 1 . 0

3.6.1 PPPoE/DHCP/PPTP Mode

If your router is configured as **PPPoE/DHCP/PPTP** connection type to your **ISP**, enter the networked computer’s **IP Address** to enable **DMZ** function.

3.6.2 Static IP (Fixed IP) Mode

If your router is configured as static **IP** connection type to your **ISP**.

- **MultiDMZ:** Select “**Enable**” to activate this function or not.
- **WAN IP→LAN IP:** Enter the **WAN IP address** and corresponding **LAN IP Address**.

3.7 Device Admin

You can update router's firmware, change password of this router and set up some management function of this router on this page.

Device Administration Settings

Product Name: Broadband Router

Version: 01.00.00.11 [Firmware Upgrade](#)

Login Password Change: Yes No

Old Password:

New Password:

Password Confirm:

WAN MAC Change:

External Admin: Enable Disable (Port 8080)

[Reset Device](#) [Factory Defaults](#)

[MAC Clone](#) [Apply](#) [Undo](#)

• **Version:** Here will show you the installed firmware version on this router. Make sure that the firmware you want to use is saved on the local hard drive of your computer. Click **“Firmware Upgrade”** button to update router's firmware. Then direct the file path and click “Upload”.

Upgrading the firmware will not change any of your system settings but it is recommended that you save your system settings before doing a firmware upgrade.

Note: Do not power off the router when it is being upgraded. When the upgrade is complete, restart the router via re-plug the power cord.

- **Old Password:** Enter the password of this router.
- **New Password:** Enter the new password of this router you want to change. Please keep the password safely. If you forgot your password, you have to reset your router by clicking the reset button in the rear panel of this router.
- **Confirm Password:** Re-type the new password.
- **WAN MAC Change:** If you want to change the default **MAC Address** is set to the **WAN's** physical interface **MAC address** on the Router, enter the **MAC Address** you want to reset.

- **External Admin:** This router allow outside user configure this router. This function also been called as Remote Management. It allows the device to be configured through the WAN (Wide Area Network) port from the Internet using a web browser. A username and password is still required to access the browser-based management interface. Enter the IP Address of outside user to allow access into this router to configure this router. To access the setting page from external side, enter “**http://<WAN IP Address>:8080**” into the web browser address column.

Note: For Security consideration, it is recommended not to enable this function if not necessary. When Remote management is enabled, please change your Webserver Port 80.

3.8 Status Monitor

This page displays the information of this router. Click “**Reload**” to re-fresh the current information

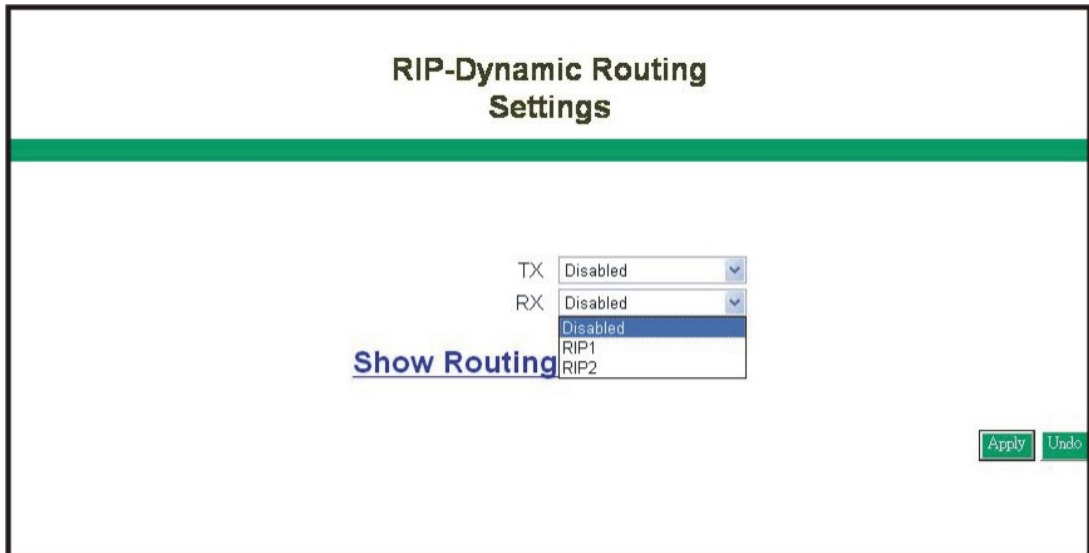
WAN Information	
Public IP Address	192.168.7.1
Public Network Mask	255.255.255.0
Public Default Gateway	192.168.7.254
Domain Name Server 1	0.0.0.0
Domain Name Server 2	0.0.0.0
Domain Name Server 3	0.0.0.0
DHCP Server	0.0.0.0
LAN Information	
Private IP Address	192.168.1.1
Subnet Mask	255.255.255.0
PPPoE Information	
Session ID	0
Connecting Time	0days,0Hours,0Minutes
PPPoE IP	0.0.0.0

3.9 RIP

RIP stands for Routing Information Protocol. RIP sends routing-update messages at regular intervals and when the network topology changes. It uses a single routing metric (**hop count**) to measure the distance between the source and a destination network. **RIP** maintain only the best route (**the route with the lowest metric value**) to a destination. After updating its routing table, the router immediately begins routing updates.

This router provides two kinds of routing mode to choose, **Dynamic Routing** and Static Routing.

Dynamic Routing means that it can be used to cache routes learned by **RIP**, thus allowing the automation of static routing maintenance. Static Routing only receives routing tables from other routers and does not send its own routing table to others. You can **refer** to the Static Routing page to set up static routing function.



- **TX:** From the pull-down menu, select the routing type, “**RIP-1**”, “**RIP-1 Compatible**”, or “**RIP-2**”, to enable the “**TX(transmit)**” function. “**RIP-1**” is the protocol used by order routers and newer routers should use “**RIP-2**”. “**RIP-1Compatible**” serves to broadcast RIP-1 and multicast RIP-2.
- **RX:** Form the drop-down list, select one of the routing information types, “**RIP-1**” or “**RIP-2**”, to enable the “**RX(receive)**” function.
- **Routing Table:** Click “**Show Routing Table**” to see update routing information.

3.10 Static Routing

Static Routing Settings

Static Routing:

Destination LAN IP: . . .

Subnet Mask: . . .

Default Gateway: . . .

Hop Count:

interface:

[Show Routing Table](#)

- **Static Routing:** Select the route entry number from **1 to 20** that you want to configure.
- **Destination LAN IP:** You can create a static route by entering the IP address of the remote host or network. If you wish to build a route to the entire network, be sure to set the network portion of the **IP address to zero (0)**.
- **Subnet Mask:** The Subnet Mask determines which portion of an IP address is the network portion, and which portion is the host portion.
- **Default Gateway:** Enter the address of the gateway device that allows for a contact between the Router and the remote network or host.
- **Hop Count:** Enter the number of hops required between the LANs to be connected. The Hop Count represents the **“cost”** of the routing transmission. The default **value is 1**.
- **Routing Table:** Click **“Show Routing Table”** to see update routing information.

3.11 Dynamic DNS

DDNS keeps dynamic IP addresses (i.e., IP addresses assigned by a **DHCP** capable router or server) linked to a domain name. Users who have a **Dynamic DNS** account may use this feature.

The image shows a configuration window titled "Dynamic DNS Settings". It features a green header bar. Below the header, there are several input fields and a dropdown menu. The "Service Provider" dropdown is currently set to "Disable" and is open, showing a list of options: "Disable", "members.dyndns.org", "www.dtdns.com", and "www.sitelutions.com". The "User Name" and "Password" fields are empty. The "Host Name (ID)" and "MX" fields are also empty. The "Wild Card" section has two radio buttons: "Enable" and "Disable", with "Disable" selected. At the bottom right, there are two buttons: "Apply" and "Undo".

- **Dynamic DNS:** When an IP address is automatically assigned by a **DHCP** server, **DDNS** automatically updates the **DNS** server. Select **Disable** or **Enable**.
- **Service Provider:** Before activate this function, please refer to www.dyndns.org to register your **DNS** service.
- **User Name:** Enter your user name from your service provider.
- **password:** Enter your password from your service provider.
- **Hostname:** Enter the host name.
- **MX:** Enter your Mail Server's domain name to enable. Or leave blank to disable.
- **Wildcard:** Select "**Enable**" or "**Disable**" to use or not use the wildcard function. Wildcard function allows your domain name contains universal characters, i.e. *, ?.

3.12 Special Application

Some applications require multiple connections, such as Internet gaming, video conferencing, Internet telephony and others. These applications have difficulties working through NAT. Special Applications makes some of these applications work with the router.

Special Applications				
	Applications	Application Name	Port Range	
			Outgoing	Incoming
1	Manual Setting			
2	Disable			
3	Manual Setting			
4	MSN Gaming Zone			
5	AOE II Client			
6	Sudden Strike			
7	Baldur's Gate II			
8	Battle Net			
9	Dialpad			
10	ICU II			
	PC to Phone			
	Quick Time_4			
	Manual Setting			
	Manual Setting			
	Manual Setting			

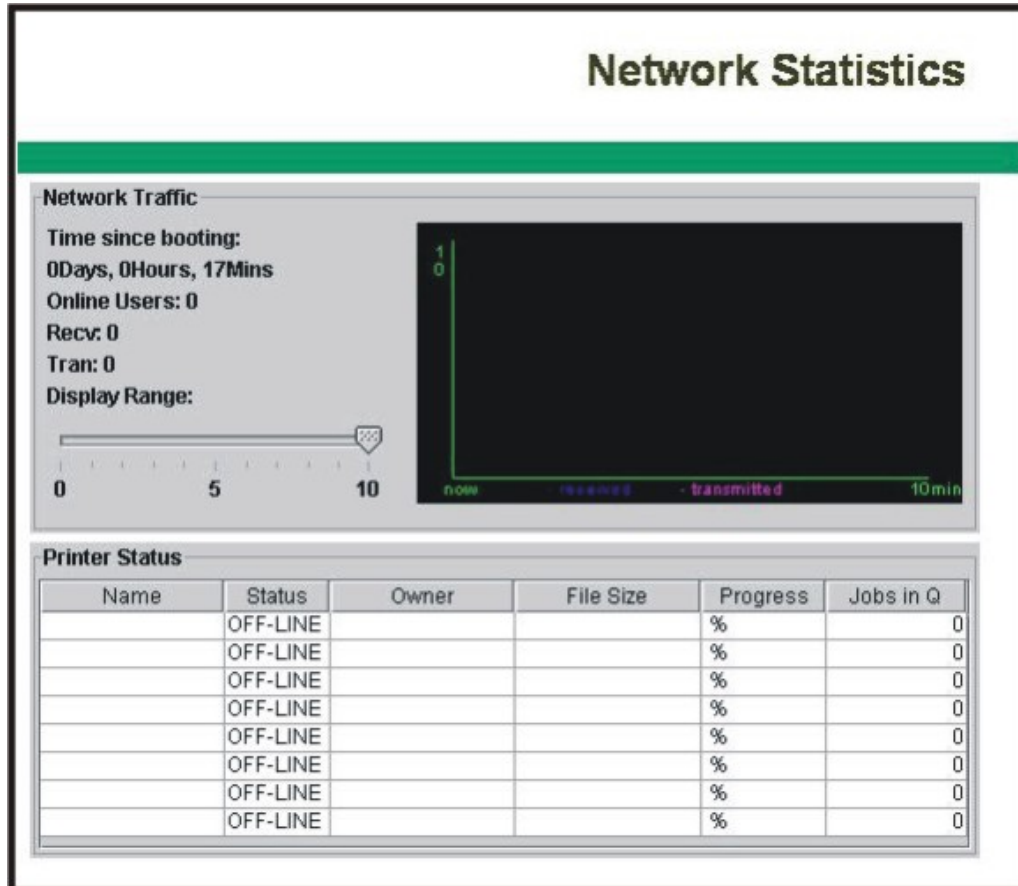
Apply Undo

You can use the default setting or manual setting on the drop down menu.

3.13 Statistics

This page displays activities occurring on the router.

Note: On Window XP or IE 6.0, you may need to install Java Virtual Machine program to see the windows. Please refer to the CD-ROM and select “Installing Java Virtual”.



3.14 Security Setting

By setting up this security setting, keep your LAN away from hacker attack.

DoS stands for Denial of Service. It's a method the hackers use to prevent or deny legitimate users access to a computer. **DoS** attacks are typically executed using **DoS** tools that send many requests packets to a targeted Internet server (**usually Web, FTP, or Mail server**), which floods the server's resources, making the system unusable. Any system that is connected to the Internet and is equipped with **TCP-based** network services is subject to attack. To prevent **DoS** Attack, set up the below option.



The screenshot shows a window titled "Security Settings" with a green header bar. Below the header, there are two settings:

- Dos Attack Defense**: Radio buttons for "Enable" and "Disable" (selected). A text input field contains "0" followed by "/min".
- Hide Public IP Address**: Radio buttons for "Yes" and "No" (selected).

At the bottom right of the window, there are two buttons: "Apply" and "Undo".

- **DoS Attack Defense**: Enter the time you want to make the DoS Attack Defense enabled. Enter "0" to disable. By enable this function, router will cut off the connection which sends a great quantity of packet on irregular continuous condition over the time you set.
- **Hide Public IP Address**: Select "Yes" to activate this function or not. When enabling this function, outside users will not know your **WAN IP Address**.

3.15 Connection Log

This table displays the connection history of PPPoE and DHCP. You can click “Reload” to get the latest status.

Connection Log

No.	Time	Description
1	2004-07-08 09:59:52	PPPoE IP: 203.67.56.4
2	2004-07-08 09:59:52	PPPoE connected
3	2004-07-08 09:54:21	PPPoE disconnected
4	2004-07-08 09:49:45	PPPoE IP: 210.244.114.36
5	2004-07-08 09:49:45	PPPoE connected
6	2004-07-08 09:37:30	PPPoE disconnected
7	2004-07-08 09:32:53	PPPoE IP: 210.64.174.150
8	2004-07-08 09:32:53	PPPoE connected
9	2004-07-08 09:25:10	PPPoE disconnected
10	2004-07-08 09:20:18	PPPoE IP: 210.64.174.254
11	2004-07-08 09:20:18	PPPoE connected
12	2004-07-07 17:51:57	PPPoE disconnected
13	2004-07-07 17:47:22	PPPoE IP: 210.64.174.153
14	2004-07-07 17:47:22	PPPoE connected
15	2004-07-07 17:39:19	PPPoE disconnected
16	2004-07-07 17:34:47	PPPoE IP: 211.74.67.240
17	2004-07-07 17:34:47	PPPoE connected
18	2004-07-07 17:31:37	PPPoE disconnected
19	2004-07-07 17:26:58	PPPoE IP: 210.64.163.234
20	2004-07-07 17:26:58	PPPoE connected
21	2004-07-07 17:19:33	PPPoE disconnected

3.16 Time Settings

Time Settings

Time Zone:
(GMT+08:00) Beijing, Hong Kong, Singapore, Taipei

Set Time Manually: Enable Disable

Year: 2004 Month: 7 Day: 8 Hour: 9 Minute: 59

Apply Undo

Select your local time zone by selecting in the drop down menu. If you want to configure this router's time and date manually, enter the time and date in the column and enable this feature. If you disable this feature, the router will use the Internet time settings.

3.17 UPnP

UPnP stands for Universal Plug and Play. **UPnP** service allows computers to discover and use network-based devices. **Windows ME and XP** include native **UPnP** services; **Windows 98** and **98SE** do not include a native **UPnP** service, but you can install via the Internet Connection Sharing client shipped with Windows **XP**.

UPnP Setting

UPnP Function: Enable Disable

Apply

UPnP Device Port Status				
Application Name	Port			Control Point IP Address
	Incoming	Outgoing	Protocol	
				none

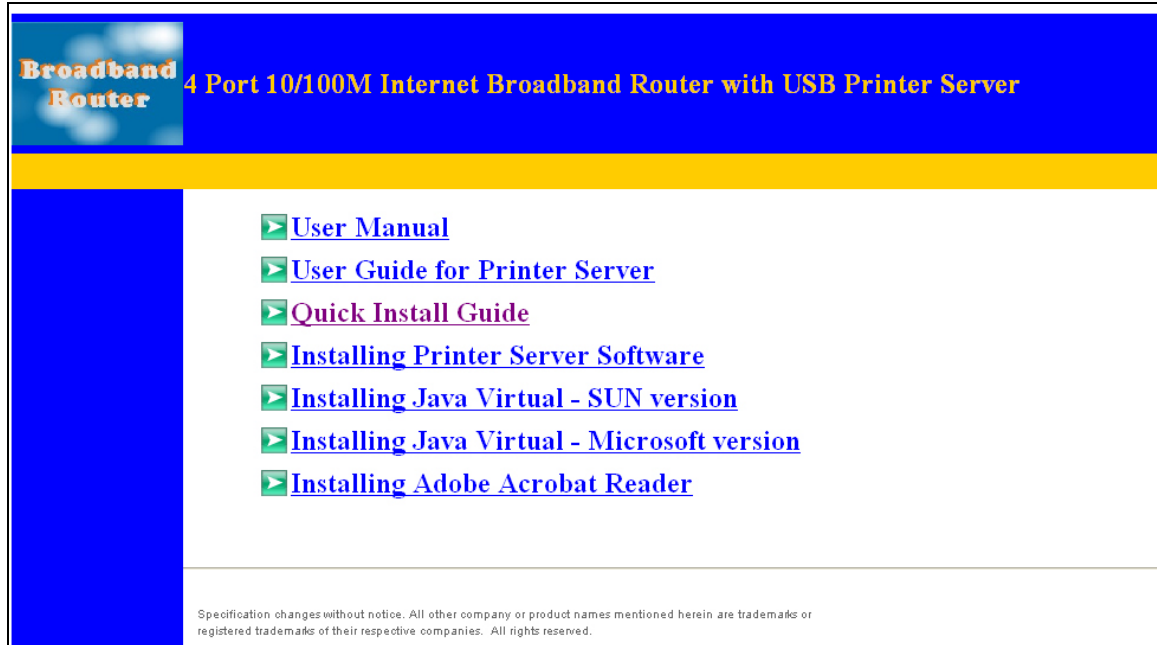
Select **Enable/Disable** to enable this function or disable. Then click “**Apply**” and the router will reboot automatically. After a few second, complete window will show up.



4. Install Printer Server

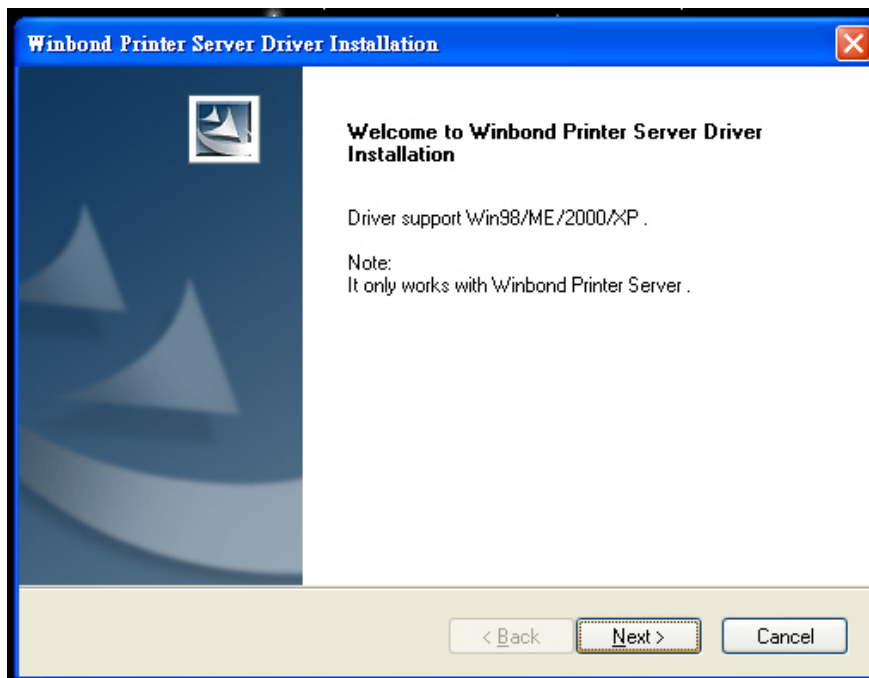
- **Insert the CD-ROM into the CD-ROM drive**

The following window is shown automatically. If not, please find setup.exe on the CD-ROM\Printer Server. And click **“Installing Printer Software”**. The Printer Server Driver only supports **Window 98/ME/2000/XP**.



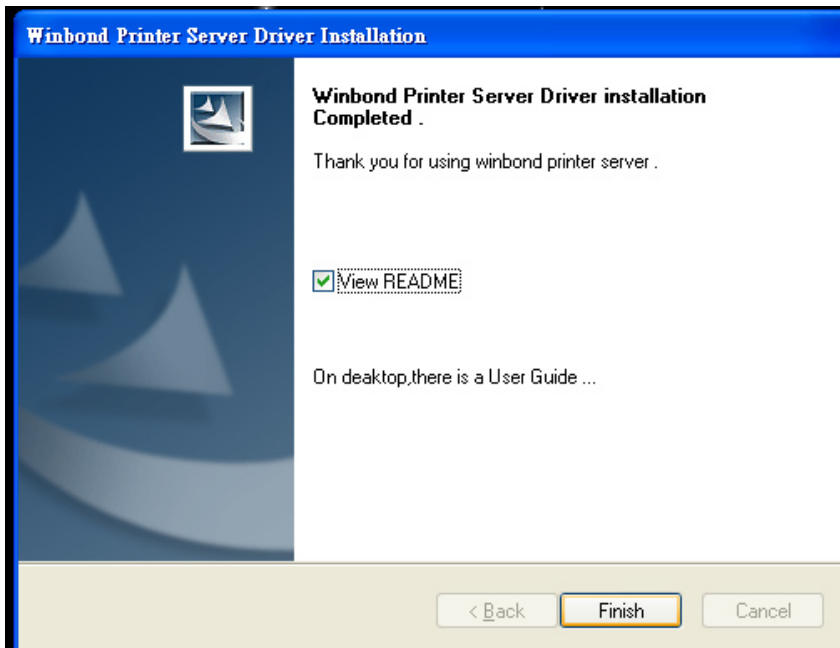
- **System will auto run setup program**

The setup wizard will lead you to complete the installation. Click **“Next”** to proceed.



- **Finish the installation**

Click “**Finish**” to complete the installation. Select the checkbox to open readme file or not.



Note: Please refer to Printer Server’s User Guide to see more details.

5. Trouble Shooting

No lights are lit on the router

The router has no power.

- Make sure the power cord is properly connected to the router.
- Make sure the power adapter is properly connected to a functioning power outlet. If it's in a power strip, make sure the power strip is turned on.
- Make sure you are using the correct power adapter (**DC 7.5V, 1Amp**).

There is no numbered light lit for a connected device

There's a hardware connection problem.

- Make sure the cable connectors are securely plugged in at the router and the device.
- Make sure the connected device is turned on.
- Be sure the correct cable is used. For computers, use a **Category 5** Ethernet patch cable. For other devices, you may need a cross-over cable or may need to use the uplink port.

Why my browser can not open the router's on-line configuration program

You may need to download and install the Java Plug-in for your Operating System. Please refer to **CD-ROM** to install. Or upgrade your browser to **Internet Explorer 5.5** and higher (with **SP1**), **Netscape 6.0** and higher, **Mozilla 5.0** and higher, **Opera 6.0** and higher

After setting up my router, I can not play on-line game

The Broadband Router uses Network Address Translation to issue several private (**virtual**) **IPs** using one public **IP address** Internet games communicate with each other based on IP addresses and **UDP** port numbers. Unfortunately, some games will be affected when **NAT** is applied. Gamers would not communicate with each other due to the side effect created by **NAT**. Such games and applications are called **NAT unfriendly** applications. You can setup "**Special Application**" on this router. Consult your game vender for correct port setting.

If you want to host the Internet game for your parties to join it is better for you to set one computer host that you are playing on to be a **DMZ** host. You will need to tell your parties to join your game on the **IP address** of the **WAN** interface of the router device. Do not tell your parties of the virtually local **IP address** assigned from the **DHCP** function of the router device or you see in the game or the computer host.

If your Internet connection service is an **ADSL PPPoE** or cable modem connection, please check the IP address of the **WAN** interface at every new Internet connections.

6. TCP/IP Port List for Internet Service

The list of TCP/IP Port for Internet service is as following table. Please note that the list is just for your reference. You may check the service provider's manual to see more details.

Service Name	TCP	UDP	Notes
AOL	5190-5193	5190-5193	American OnLine
AOL ICQ	5190, dyn >=1024		Message
AOL Instant Messenger	5190	5190	American OnLine
Citrix ICA	1494, dyn >=1023	1604, dyn >=1023	Remote application access
DirectX Gaming	47624, 2300-2400	47624, 2300-2400	many network games
Distributed.Net RC5/DES	2064		Distributed computation
DNS		53	Domain name Service
Doom	666	666	Network game
FTP	21		File Transfer Protocol
Glimpseserver	2001		Search engine
Gopher	70		
H.323 Host Call	1720	1720	H.323 host call
HTTPs	443		Secure HTTP (SSL)
ichat client, server	4020	4020	Chat rooms
ICU II	2000-2003		Videoconferencing
iSpQ	2000-2003		Videoconference
LDAP	389	389	Lightweight Directory Access Protocol
Mirabilis ICQ	dyn >=1024	4000	Locator, chat
MS ICCP	1731	1731	Audio call control (Microsoft)
MS Netmeeting	dyn >=1024,	dyn >=1024	Video conference
MS NetShow	1755	1755	Streaming video
MSN Gaming Zone	28800-29000	28800-29000	Network Game
MSN Messenger	1863		Instant messaging
Netscape Conference	6498, 6502	2327	Audio conference
NNTPs	563		Secure NNTP news (SSL)
Palm Computing Network Hotsync	14237	14238	Data synchronization
pcAnywhere	5631	5632	Remote control
POP3	110		Post Office Protocol Version 3
QuickTime 4	RTSP	RTP	Streaming audio, video
Real Audio & Video	RTSP, 7070	6970-7170	Streaming audio and video
Remotely Possible (ControllIT)	799		Remote control software by CA
RTSP	554		Real Time Streaming Protocol

SMTP	25		Simple Mail Transfer Protocol
SOCKS	1080		Internet proxy
Squid	3128	3130	Web proxy cache
SSH	22		Secure Shell
Telnet	23		
Timbuktu	1417-1420	407	Remote control
ULP	522	522	User Location Protocol
Virtual Places	1533		Conferencing
VocalTec Internet Phone	1490, 6670, 25793	22555	Video conference
Win MX	6399	6399	Peer to Peer file exchange
Xing StreamWorks		1558	Streaming video
Yahoo Messenger – messages	5050		Message
Yahoo Messenger – Webcam	5100		Video
Yahoo Messenger –Voice Chat	5000~5001	5000~5001	Voice chat

* Above TCP/IP Port List is from the following web page: <http://www.akerman.ca/port-table.html>
(The copyright is belong to the writer of the web)